

FRP System

fixed - reference - points



Perfect transfer from the planning model to the mouth

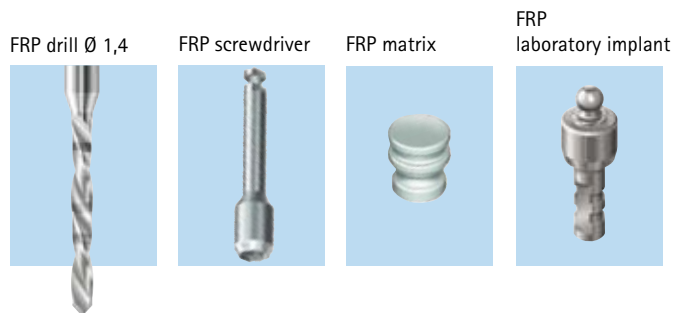
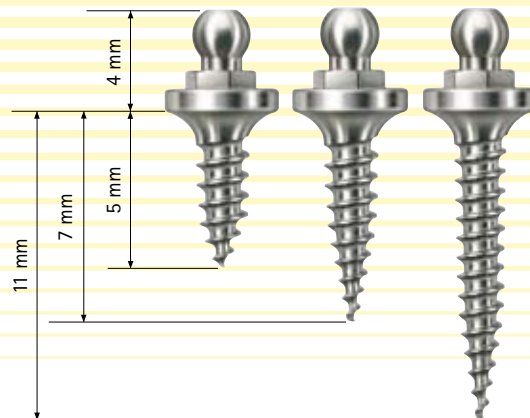
Three secure points in an edentulous situation

Three FRP screws guarantee a secure three point support in the bone. This allows secure positioning of templates independent of the mucous membrane.

The transgingival insertion is performed in just two stages: pre-drilling with the 1.4 mm FRP drill and easy insertion of the FRP screw using the power screwdriver.

The FRP matrix is used to impress and fix the template.

Secure transfer of the oral situation to the model and vice versa with the appropriate laboratory analogue implant.



FRP screws insertion



1 Use the FRP drill to drill transgingival.



2 The FRP screw is tightened using the FRP screwdriver in the contra angle drill.



3 Three reference points produce a uniform and secure support.

Impression and model



1 The FRP matrices are placed on the FRP screws...



2 ...and a closed tray impression is taken. The laboratory implants are inserted into the FRP matrices...



3 ...and the situation model is produced.



4 FRP fixed scan or drilling templates or temporary restoration can now be performed.

Easy and precise positioning of templates



1 Three reference points...



2 ...fixing the drilling template securely in defined position.



3 This allows stress-free working and easy intra-operative removal and replacement of the template.

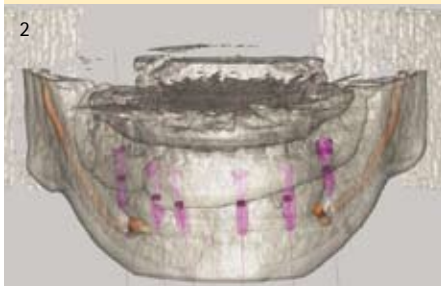
With guiding-templates, templates the implant analogues can be fixed on the model with the aid of the implant insertion tools. In this manner the dental technician can anticipate the implantation and have a model to create a superstructure before the implantations. This allows to insert the provisional restoration right after the implantation in terms of an immediate loading procedure.

Easy and precise transfer from the model into the mouth

The FRP screws have a short time and are not suitable for fixing temporary restorations!



The three-point support results in a reference area, allowing transfer of the information from the oral situation to the model.



Work like scan or drilling templates can be pre-prepared on the model to permit secure oral positioning.



The pre-prepared temporary bridge restorations for immediate masticatory pressure guarantees the FRP the correct oral fixation. After integration of the abutments, the snap-ins are removed, or filled with resin.

Photographs: Dr. Nickig, Augsburg and Labor Stachulla & Liedtke, Augsburg/Mühlheim

Literature:

Prof. Wichmann et al. University Erlangen: Implant aesthetics with Fixed Immediate Provisional Restorations QDT Vol. 28/2005

PD Dr. med. dent Stephan Holst, University Erlangen: Application of interim fixed reference points to maintain the occlusal vertical dimension: A technique for immediate loading protocols in the edentulous mandible; The journal of prosthodontics Volume 96 Nr. 2 - 2006

Dr. F. Heinemann, Morsbach, Dr. Truppe, Wien: Ist die Navigation zur Implantatinsertion in der zahnärztlichen Praxis geeignet? Implantologie Journal 7/2005

FRP is registered for patent.

Easy and precise positioning of templates



Three reference points.



The tracker of the navigation system is fixed to the FRP template.



The geometry of the tracker security of the template is particularly important, because minimum movement could lead to dangerous deviations.

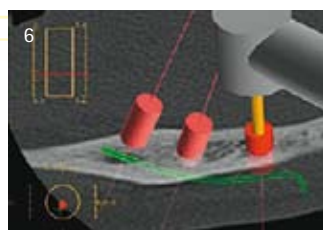
Advantage of the navigation for a guided implantation is the non-dependence on special items from implant producers.



The relieved areas of the implant regions can be clearly seen.



The position of the drill in the bone...



...can be followed on the computer monitor.

Photographs: Dr. Heinemann, Morsbach

FRP screw Assortment

FRP Assortment 5 mm

3 x FRP screw 5 mm
Order No. FRP-00SD

1 x FRP drill Ø 1.4 mm

1 x FRP screwdriver
contra angle

6 x FRP matrices

3 x FRP laboratory implant

FRP Assortment 7 mm

3 x FRP screw 7 mm
Order No. FRP-00SE

FRP Assortment 11 mm

3 x FRP screw 11 mm
Order No. FRP-00SF

FRP single items



FRP screw

3 pieces
length 5 mm
Order No. FRP-0005



FRP screw

3 pieces
length 7 mm
Order No. FRP-0007



FRP screw

3 pieces
length 11 mm
Order No. FRP-0011



FRP drill

Ø 1.4 mm
2 pieces
Order No. FRP-D014



FRP screwdriver Contra-angle

1 piece
Order No. FRP-00EW



FRP matrices

6 pieces
Order No. FRP-00MA



FRP laboratory implant

Ø 4 mm
3 pieces
Order No. FRP-00LI