

The Implantation Simulator

„Successful implanting with the Phantom simulation“
according to Prof. (NY) Manfred Lang



Practical training on artificial patients



INTERNATIONAL TRAINING CENTER
FOR DENTAL IMPLANTOLOGY

IFZI GmbH in cooperation with

bredent
medical

The artificial patient



„Implant surgical training will in future not take place on the patient, but on a phantom, comparable to pilot-training on a flight simulator“.
Prof. (NY) Manfred Lang, Nürnberg.

Operating as on a patient

The complete implant procedure using the artificial patient is carried out under surgical conditions. This enables a realistic course of treatment and makes it possible to train all operations techniques before application on patients.

The supervisor makes sure that the operating surgeon, dependent upon implantation region, takes the ideal seating position, and that the „patient“ is correspondingly positioned.

In a group of three and a supervisor per phantom patient, participants switch positions from assistant to operator. This permits viewing from different positions - helpful when writing ones own implant notes.



Realistic operation simulation

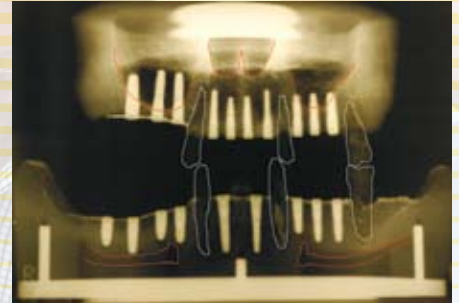


Tripartite with a trainer offers intensive schooling.
Prof. (NY) Manfred Lang during an implantation.

Phantom model



The upper and lower jaw models - with and without mucous membrane coverage - are repactive to the anatomy of an implant patient with badly reduced residual teeth.



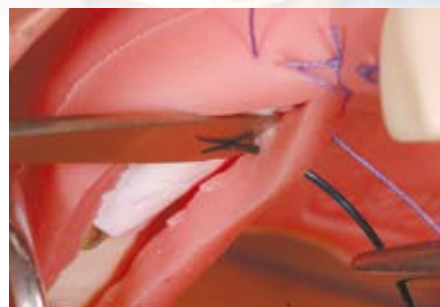
X-ray control after insertion of all implants and sinus lift right.



Perfect detail such as mucous membrane coverage, nerve path and paranasal sinuses with incisor membrane, makes reality training possible.



Incision



Suture technique



Implant insertion



Direct sinus lift...



...with implant insertion



Completion of the restoration phase from the impression to the integration of the restoration.



The implantology training on artificial patients was drawn up by the IFZI in Nuremberg as the strategic partner of bredent medical in the area of further training. Certified IFZI lecturers offer courses on phantom training in many European countries. Please contact the respective local training institute.
Registration: Ms. Anne Monnier Tel. · (+49) 09 11 / 3 47 46 24
Mobil: (+49) 1 75 / 6 24 12 54 · www.IFZI.de

The 5 modules of implantology training

The contents of these implantology training modules on phantom simulator, and the basic quality standards are permanently controlled and further developed by the IFZI, to keep with the highest scientific demands.



Module 1

The surgical training begins with implantology treatment planning. Secondly, introduction to the selected instrument sets particular to implantology and the materials which are to be used are shown. Afterwards training is given on operation conditions, the incision and the suture techniques special to the upper and the lower jaws.



Module 2

Here free-handed bone preparation is trained. A completely crucial meaning is given to the seating position of the operating surgeon and the corresponding position of the „patient“, because only a clear and defined view of the mesio-distal and oral-vestibular level, can result in a three-dimensional adjustment of the implant drill.



Module 3

This special course contains the topics immediate implantation, indirect and direct sinus lift, through to the application of the sinus implant stabilizer SIS. Also the different augmentations and membrane techniques are demonstrated and trained.



Module 4

The key to success in the implantology lies in the restoration. Therefore close co-operation between dentist and dental technician is a compelling condition. This course dedicates itself to the restoration side of implantology from the impression taking, planning, abutment selection and up to integrating the restoration.



Module 5

Individual training for the surgical team.

A good dance couple must control the steps. Likewise, the operating team behaves with surgical precision. In module 5 all treatment steps of the operating surgeon and his assistant are rehearsed. A substantial point is the training of the assistant by experienced colleagues.

Literature:

The Implantation simulator / Prof. (NY) Manfred Lang, Flohr-Publications, 2006. ISBN 3-9807023-6-7
SINUSLIFT – From intern sinus lift to Sinus-Implant-Stabilizer SIS / Prof. (NY) Manfred Lang
Flohr Publications 2004
Implant prosthetics / The Cookery Book of Dental Implantology, available Autumn 2007