

Dear Colleagues,

It has been an exciting year at the Breident office and we would like to recap on some of the development which might have gone unnoticed. We would also like to highlight some of the new things to come during next year which will add to the growth of the symbiosis between our clinical and technical departments.

This will bring improvements to all areas of our support aided also by the launch of our NEW website during January 2009.

Above all I would like to take this opportunity to thank you for your custom and support as without you all of our progress would not have been possible.

Some of the most recently launched products

SKY temp (see fig 1)

- Perfect gingival reproduction with three prefabricated designs
- Extra smooth surface avoids irritation of mucosa
- Temporary restorations can be easily and quickly fabricated



(fig 1) SKY temp

SKY esthetic line (see fig 2)

Surgically and prosthetically optimized abutment range due to the caVex design. This design provides the perfect solution for surgical and restorative requirements with the available space values differing only slightly from the maximum values:

- Maximum – prosthetic: 1.4 mm
- Maximum – surgical: 1.1 mm



(fig 2) SKY esthetic line

Fast & fixed (see fig 3)

Patients wish to have stable teeth – ideally placed immediately after the first surgical treatment. Treatment concepts which allow for this kind of procedure are generating more interest since they avoid complicated ridge augmentation procedures which are frequently carried out in two stages.

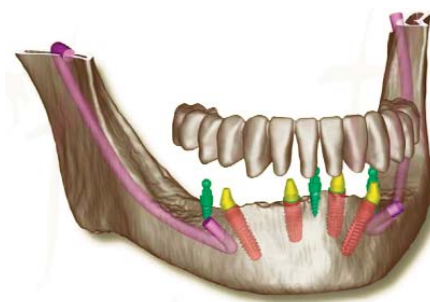
Fast & fixed is a prosthetic concept for immediate restorations of edentulous patients. To achieve enhanced support of the temporary restoration, the posterior implants can be placed at an angle of 35° to the distal direction. The special abutments compensate for the angular position.



(fig 3) Fast & fixed

SKY Plan X ~ 3D implant planning & template production system (figs 4 & 5)

The SKY plan X is a comprehensive program with many measuring and planning functions as well as an extensive implant and abutment database from all well-known manufacturers. Through a special implant designer it is possible to create individual implants and abutments.



(fig 4) SKY Plan X

SKY Plan x software allows you to analyze data from any CT scanner in terms of:

- Representation of the bone surface
- Identifiable bone structure/density
- Measurement of bone density for the prediction of healing (Hounsfield unit)
- Visible nerve position
- Identification of the maxillary sinus
- Cut view of the planned implant position on the detailed analysis

For the accurate implementation of planning data for the surgery - based on protocols - the data will be adjusted in the table coordinates SKY5X. Accordingly the production of high precision surgical template is assured. The results can be easily understood and vividly shown to the patient on the monitor and special needs can be addressed.



(fig 5) SKY5X

Some of the upcoming developments

As always, Bredent have been working on developing our range further and enhancing the symbiosis between our clinical and technical products. Some of the current developments, of which majority will be launched at the IDS in Cologne – 24th/28th March 2009, are listed below.

SKY uni.fit abutment (fig 6)

This is a unique titanium cylinder that will allow the laboratory to create custom abutments made out of zirconia, gold, acrylic (any material) using CAD/CAM technology. The titanium cylinder and the accompanying sleeve are scanned with the laboratories usual scanner.



(fig 6) SKY uni.fit abutment

A corresponding abutment is produced and adhesively connected to the titanium cylinder. This reduces the need for sending the work outside the laboratory or to other countries for completion.

MiniSKY (fig 7)

This is a reduced diameter one-piece, and later also as a two-piece, implant. It will be used initially as a fixed reference point in the mouth and eventually as a permanent fixture. Current lengths are 6mm and 10mm, however



(fig 7) MiniSKY

12mm and 14mm will follow shortly. The surface will be 'Osseo connect', like our blueSky, so it is acid etched and sandblasted.

Bone substitute/ membrane materials

We are currently working on integrating a range of bone substitute materials (synthetic and natural) to complement our clinical products.

Sub-crestal implant

Following most recent consultations with our key network clinicians Bredent are working on the prototypes and we should soon see some trials running. It is our goal to have the implant within 2009.

As always, there are many more projects we are working on so more about those in the upcoming year and the new edition of the SKYline...

Contact details

Address

Bredent UK Ltd,
Suite 1, 67/77 Chatsworth Road,
Brampton, Chesterfield
Derbyshire
S40 2AL

Telephone

01246 559 599

Fax

01246 557 777

Email

enquiries@bredent.co.uk

Web

www.bredent.co.uk



ADi

Association of Dental Implantology UK

ADI Biennial Implant Team Congress

7-9 May 2009 ~ ICC, Birmingham
(International Convention Centre)

Dr. Michael Weiss – Perfect aesthetics with SKY implants

Since the demands of the patients for excellent aesthetic results have increased significantly over the past years and with the newly developed manufacturing techniques, special bio-connect surface, excellent biocompatibility and a refined surgical protocol – SKY implants are proving to be the implant material of the future.

Dr. Weiss specializes in computer aided surgery using SKY Plan X software to achieve precise results with predictable aesthetics.

Dr. Sven Hangert - Fast & Fixed - Stable teeth immediately!

More and more patients want to receive fixed restorations - immediately. This is not a simple task for the dentist since insufficient

bone quantity in the edentulous ridge frequently excludes the use of a conventional implant therapy. Consequently, a treatment concept which allows to prepare fixed restorations without augmentation and several surgery procedures represents an attractive alternative.

Come and see for yourself!

- Venue: ICC, Hall 6
- Date: 9th May 2009
- Time: 10.00-14.00 (lunch included)
- Booking fee: £35.00

Contact Details

Mrs Claire Ledger, Bredent UK Ltd,
Suite 1, 67-77 Chatsworth Road,
Chesterfield S40 2AL

Booking

email: medical@bredent.co.uk
tel: 01246 559 599

Booking is essential as places are limited to 50 participants!