

X-resin flow

Radiopaque silicone varnish

for diagnoses, preoperative planning and
prosthetically oriented planning

X-resin flow allows to fabricate a scan template with the existing denture in just a few minutes.

This radiopaque silicone varnish is applied to the teeth of a full denture and thinly spread using a disposable brush.

Allow the material to harden for a short moment – that's it.



X-resin flow is perfectly visible after the scan (DT/DVT).

The contours of the teeth can be clearly recognized in the scan image (DVT or CT) and thus prosthetically oriented alignment of the implants in the implant planning software is enabled. This facilitates planning considerably. If X-resin flow is applied to the basal area, the thickness of the mucosa can be clearly determined in the scan image. The silicone varnish can be easily removed after the scan.



X-resin flow is supplied in the double-mix cartridge to ensure a perfect mixing result and fast application.

Use



X-resin flow is applied to the full denture.



The varnish is spread with a brush.



The silicone varnish has set after a few minutes.

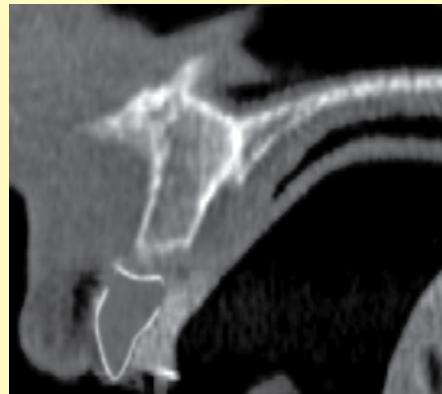


To be able to determine the thickness of the mucosa, the basal area is coated with X-resin flow.

If a DVT is available in the practice, X-resin flow can be used to avoid the complex fabrication of a scan template.

The scan template is immediately „produced“ on location. If a patient comes to receive an initial diagnosis, a volume scan can be carried out using X-resin flow. If an implant restoration is planned later on, the data from the first scan can be used for 3D implant planning without the need for the patient to undergo another scan procedure.

Fast and low-cost prosthetically oriented implant planning!



Result in the scan image

Ordering information



X-resin flow
50 ml

Accessories:



Dosing device
1 piece
REF 320 0044 0

Mixing cannulas, size 1 blue
12 pieces
REF 320 0045 0

