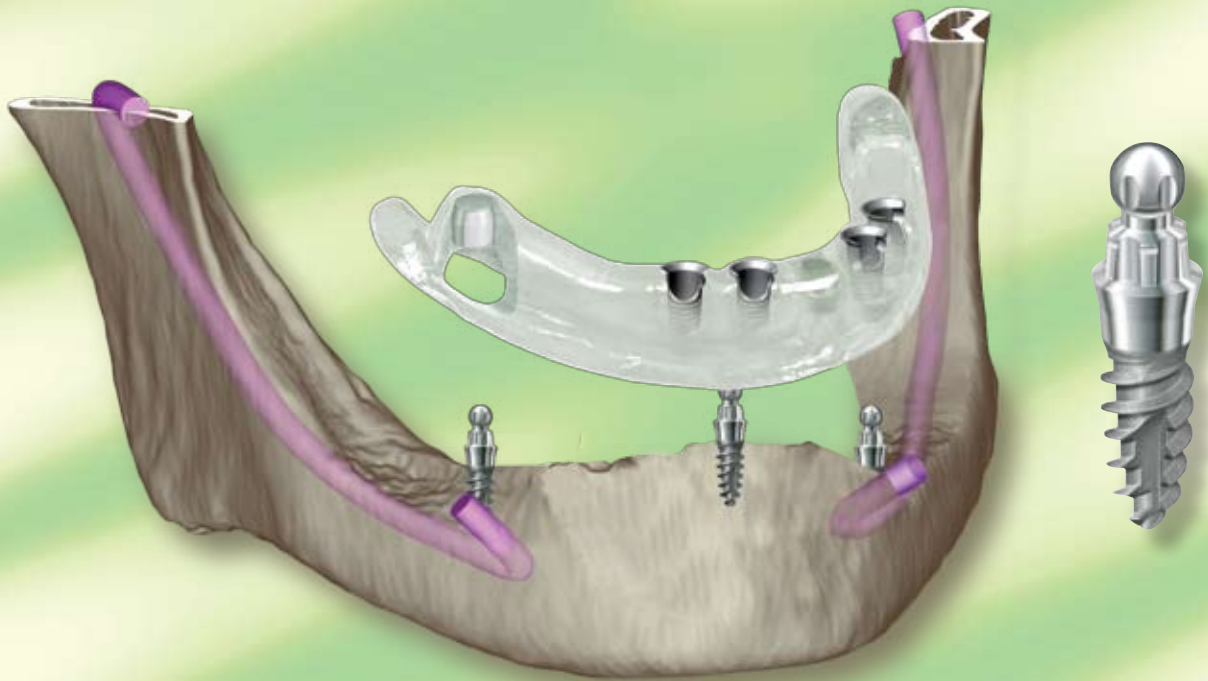


mini¹SKY FRP

Fixed Referend Points



The basis for successful implant planning



mini¹SKY FRP

The basis for successful implant planning

Transferring implant planning from the screen to the mouth is frequently difficult, time-consuming and/or lacks precision, in particular in edentulous patients:

- Bone-supported drilling templates require major flap procedures and are very traumatic for the patient
- Mucosa-borne drilling templates are very imprecise because they do not provide any fixed reference points for orientation
- Telenavigation involves high investment costs, complete change of work routines and is still associated with uncertainty.



mini¹SKY FRP

The mini¹SKY FRP (FRP = Fixed Reference Points) planning implant solves these problems in an easy and dependable manner and normally avoids flap procedures. Three mini¹SKY FRP implants provide fixed reference points in the edentulous jaw which allow:

- Reliable fixation of the scan template
- Reliable fixation of the drilling template
- Anchoring the denture already during the planning phase

Based on 3D planning, the mini¹SKY FRP implants create the basis to transfer and perform implant placement safely and using minimal invasive treatment

Patient comfort is increased until the definitive restoration is integrated.



Dr. Michael Weiss, OPUS-DC Ulm

With mini¹SKY FRP an auxiliary implant is available for the fixation of the scan template and the drilling template, which ensures high precision for planning implant placement in the edentulous and partially edentulous jaw. Moreover the mini¹SKY FRPs can be used for fixation of the denture/restoration during the planning phase. This way numerous problems of other planning systems can be eliminated.

Clinical use with SKY fast & fixed

Placement of miniSKY

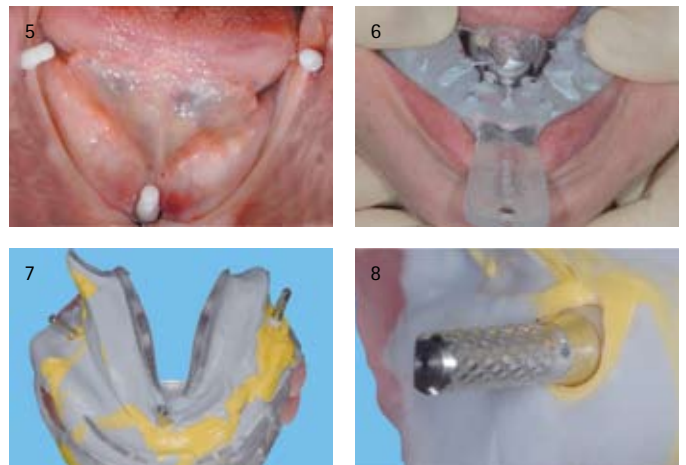
Three mini'SKY implants are inserted in the edentulous jaw. The Twistdrill included in the SKY OP-Tray is used to drill the cavity and then the implant is screwed in.



Impression

The miniSKY impression abutments are clipped on and the impression of the implant position can be taken.

The laboratory analog is repositioned in the impression cap for the fabrication of the model.

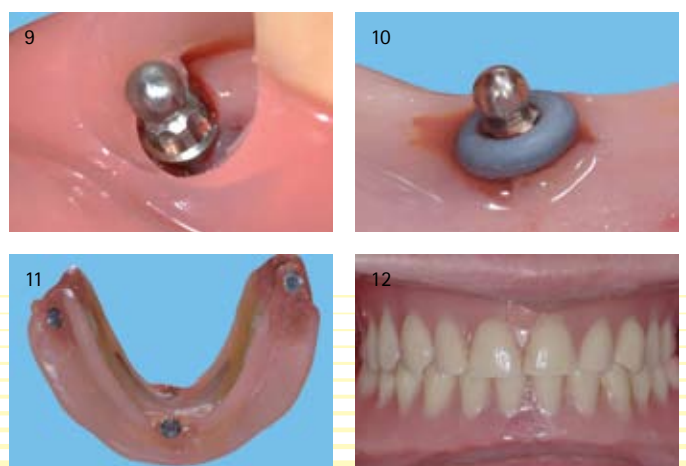


Supporting the existing restoration

The existing restoration of the patient can be immediately fixed on the mini'SKY implants using the SKY precious metal matrix or the SKY O-ring attachment.

When integrating (by polymerization) the matrix with Qu-resin, an additional O-ring prevents material from flowing in undercuts.

The patient will benefit from the increased stability already at this stage prior to minor surgical treatment.



Clinical use with SKY fast & fixed

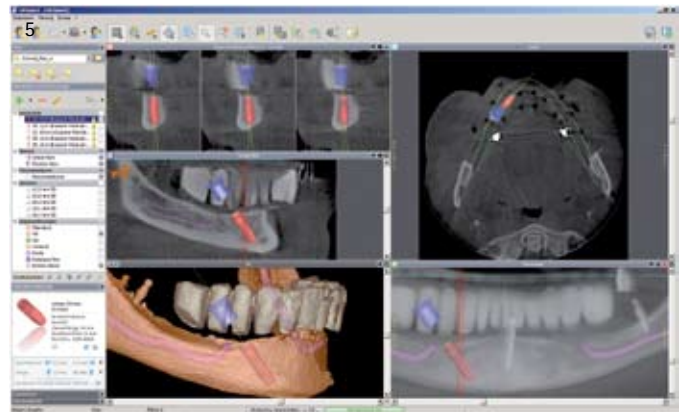
Preparing the scan template

A set-up of radiopaque teeth made of X-resin is integrated into the scan template to allow prosthetically oriented planning and to ensure that implants are properly positioned.



Implant planning

Then implant planning is carried out using SKYplanX. All anatomically relevant structures and the prosthetic planning can be considered.



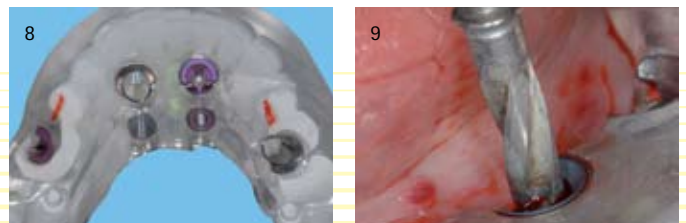
Fabrication of the drilling template

By using the SKY5X coordinate table, the implant positions are now easily and accurately transferred to the drilling template that is fixed on the model with the miniSKY implants.



Implant placement

Using the drilling template that is safely fixed on the 3 miniSKY implants, the definitive implants can then be placed so that the prepared restoration can be fixed on the SKY fast & fixed abutments in situ without major corrections.



A satisfied and happy patient leaves the practice with an integrated fixed restoration.



The comprehensive 3D planning system from bredent – Prosthetically oriented implant planning from a single provider

With mini¹SKY FRP an auxiliary implant is available for the reliable and reproducible fixation of the scan template and the drilling template which ensures high precision in the edentulous ridge. The mini¹SKY FRPs can be used for fixation of the restoration during the planning phase.

The radiopaque X-resin material facilitates prosthetically oriented planning since the planned restoration can also be seen in the CT or DVT pictures (see fig. 2).

Prosthetically oriented planning can be easily and quickly visualized using the user-friendly SKYplanX software. The SKY5X coordinate table allows precise transfer of the data of each implant to the drilling template (see fig. 3).

The accurately planned drilling template is safely fixed in situ and surgery based on minimal invasive treatment can be performed (see fig. 4).

The comprehensive system supports and improves the communication between the implantologist and the dental laboratory during all phases of implant treatment and creates the preconditions to achieve the best possible result.

Literature:

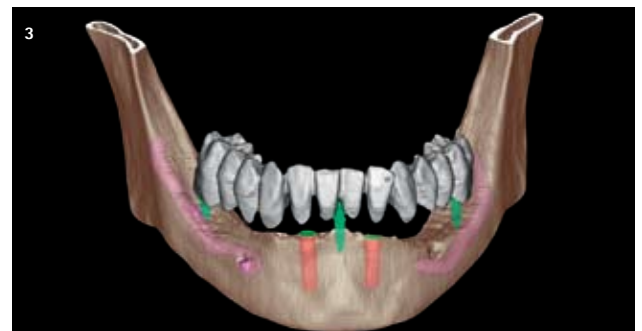
- Ritter L, et al.: 3D X-ray meets CAD/CAM dentistry: a novel procedure for virtual dental implant planning. *Int J Comput Dent* 2009;12:29-40.
- Neugebauer J, et al.: *Die Digitale Volumentomografie in der Zahn-, Mund- und Kieferheilkunde - Grundlagen, Diagnostik und Behandlungsplanung*. Berlin, Chicago, Tokio: Quintessenz Verlags-GmbH; 2007. p. 159-191.
- Neugebauer J et al. Three-dimensional diagnostics, planning and implementation in implantology. *Int J Comput Dent* 2006;9:307-19.
- Mischkowski RA, et al.; Comparison of static and dynamic computer-assisted guidance methods in implantology. *Int J Comput Dent* 2006;9:23-35.
- Ganz SD. Presurgical planning with CT-derived fabrication of surgical guides. *J Oral Maxillofac Surg* 2005;63:59-71.
- van Steenberghe D et al.. A computed tomographic scan-derived customized surgical template and fixed prosthesis for flapless surgery and immediate loading of implants in fully edentulous maxillae: a prospective multicenter study. *Clin Implant Dent Relat Res* 2005;7 Suppl 1:S111-20.
- Heinemann F. et al.: Ist die Navigation zur Implantatinsertion in der zahnärztlichen Praxis geeignet? *Implantologie Journal* 7/2005
- Holst S. et al.: *Implant Esthetics with Fixed Immediate Provisional Restorations QDT* 2005, 129 - 143
- Besimo CE et al. Accuracy of implant treatment planning utilizing template-guided reformatted computed tomography. *Dentomaxillofac Radiol* 2000;29:46-51.
- Prof. Wichmann et al. *Universität Erlangen: Implant Esthetics with Fixed Immediate Provisional Restorations QDT* Vol. 28/2005



1 The set-up for the esthetic try-in and the scan restoration with visio.lign veneers.



2 The scan template with radiopaque teeth (identical with the esthetic try-in) is placed on mini¹SKY FRP implants to ensure reliable fixation.

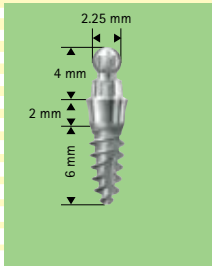


3 The 3D view shows the scan teeth in the planned positions; prosthetically oriented implant planning is carried out.

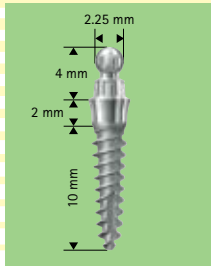


4 The drilling template made of sterilizable 3D-resin is perfectly positioned with mini¹SKY FRP implants.

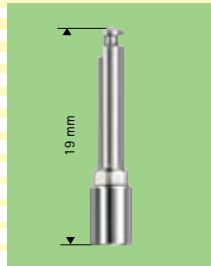
Information on ordering



mini'SKY L 6 mm
REF m1SKYL06



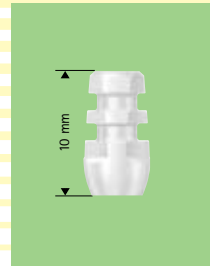
mini'SKY L10 mm
REF m1SKYL10



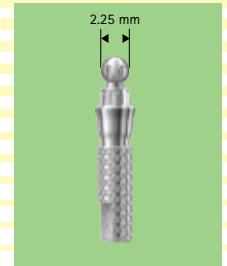
miniSKY screwdriver insert
REF mSKYXWM6



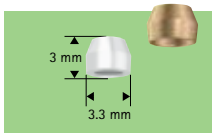
SKY ratchet adapter
REF SKYADAP6



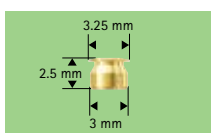
miniSKY impression cap
REF mSKYXPA0



mini'SKY laboratory analog
REF m1SKYXIA



mini'SKY planning matrix, white
3 pieces
REF m1SKYPLM



SKY precious metal matrix
REF SKYGM225



SKY O-ring
REF SKY-OR50

Treatment concepts



SKYplanX 3D Implantat planning software
REF SplanX01



SKY5X coordinate table for the fabrication of a drilling template and the placement of drilling sleeves.
REF SplanX02



SKYplanX drilling sleeves provide protection against twisting and falling out. Deep lateral recess for simple insertion of the surgical drills. Sizes can be requested.



Qu-resin – sterilizable, quick-setting, self-curing denture repair resin

Qu-resin dentin
50 ml

REF 540 0116 2

Qu-resin pink
50 ml

REF 540 0116 1



X-resin – sterilizable, radiopaque paste material for diagnosis, presurgical planning and prosthetically oriented planning.

X-resin OPG
50 ml

REF 540 0115 8

X-resin CT, DVT
50 ml

REF 540 0115 9

