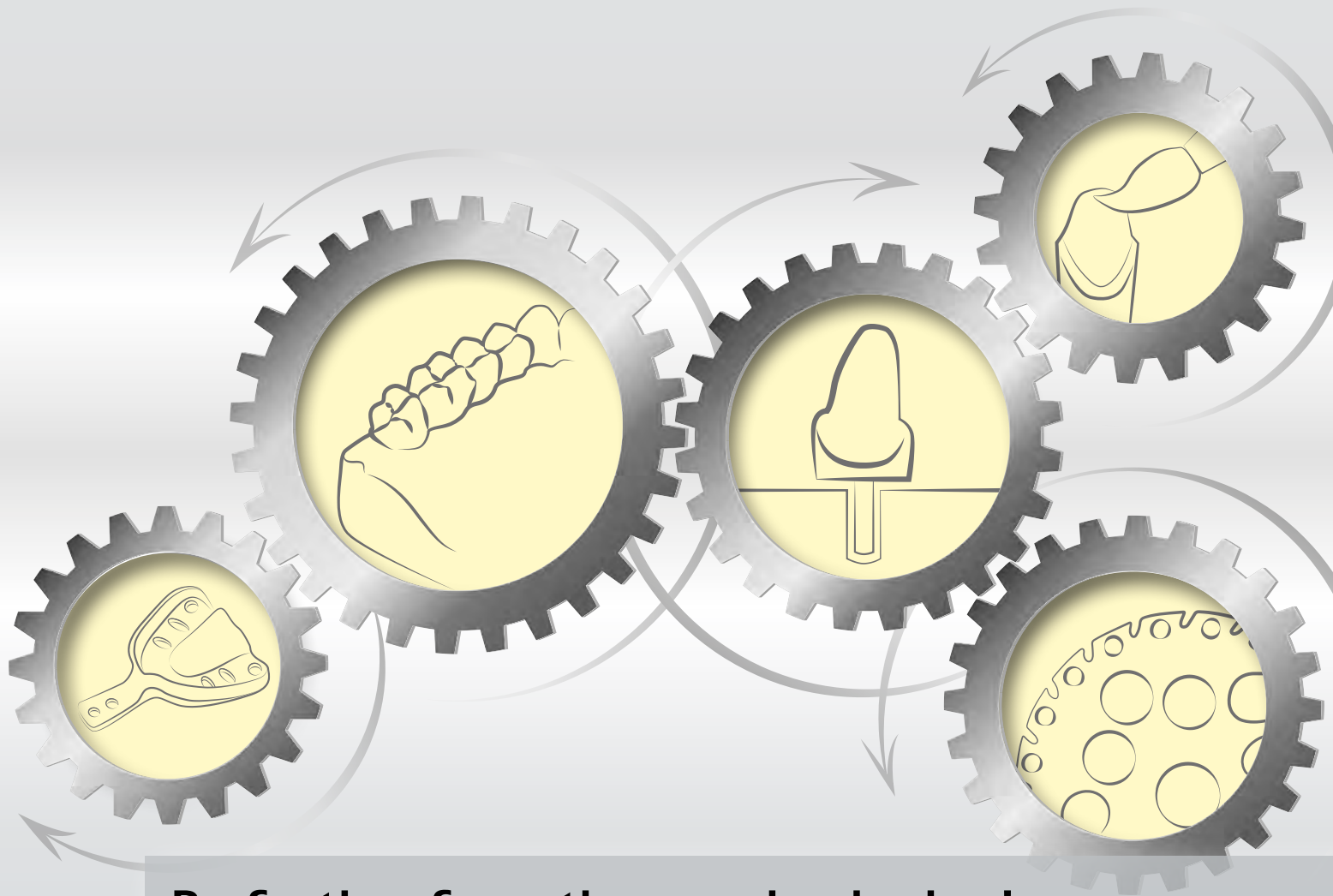


Preparatory work



Perfection from the very beginning!

Preparatory work

The manufacturing process for dental technical treatment in the laboratory starts with preparatory work. Therefore, high-quality, matched products must be used as early as this stage for a high level of precision, to achieve the correct foundation for further processing.

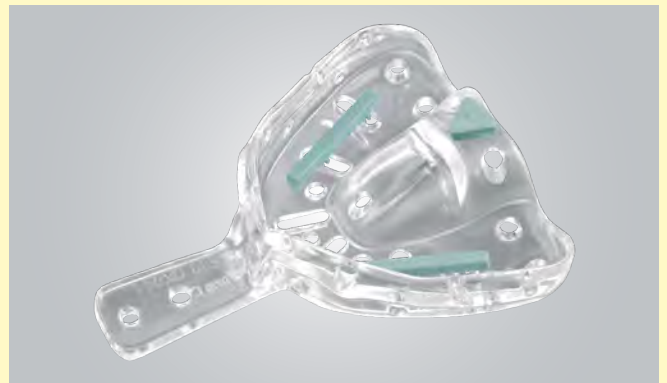
bredent develops, produces and sells innovative model system components and devices to efficiently support dental technical laboratories as well as low-expansion plasters coordinated with the impression materials for best fit. Additional products

for time-saving preparatory work, such as die varnishes and light-curing materials, facilitate daily work and reduce possible sources of error during the process.



Impressions

High-precision silicone-based impression materials enable an exact reproduction to be created with a high level of design accuracy for the perfect base – a working model made from plaster or resin. Various flow properties for the corresponding requirements provide the ideal pre-requisite for correct impression taking of the situation in the mouth. The pre-fabricated individual single-use impression tray offers the highest level of precision for an impression that is stress-free for the patient thanks to its special shape.



Model manufacture

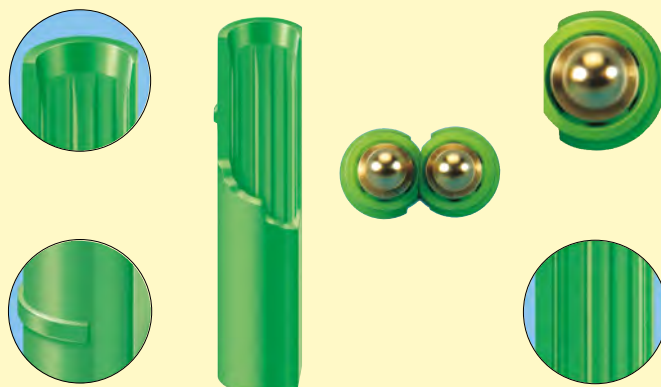
Raw materials of superior quality for high-quality models are the pre-requisite for the development and production of model materials such as plasters and resins. The coordinated expansion of the plasters to the impression materials enables an exact reproduction of the situation in the mouth to be created and therefore offers the correct base for further processing. The Exakto-Form model resin, with a high degree of edge stability, particularly with thin-walled inlays, provides a cost-saving method with a high safety factor.





Model systems

The high-quality and accurate Master-Split model system with various model formers and the reusable Split-Cast insert enables high profitability for the laboratory. The corresponding and innovative Master-Pin, with a space-saving sleeve, offers perfect slippage whilst simultaneously holding the die securely.



Die varnishes

The display of colours of various die varnishes offers the correct base for every situation. The visual layer thickness checks enable precise application, in the desired layer thickness. The choice of curing – air-drying or light-curing – allows various levels of hardness to be achieved and thus, appropriate protection of the die to be maintained.



Accessories

Useful accessories support accuracy of fit from the very beginning and therefore make the daily work in the laboratory easier. Everything is on offer, from low-expansion brush resin for resin dies in various colours to a real blend of plasters and their devices and materials optimised for surface processing.

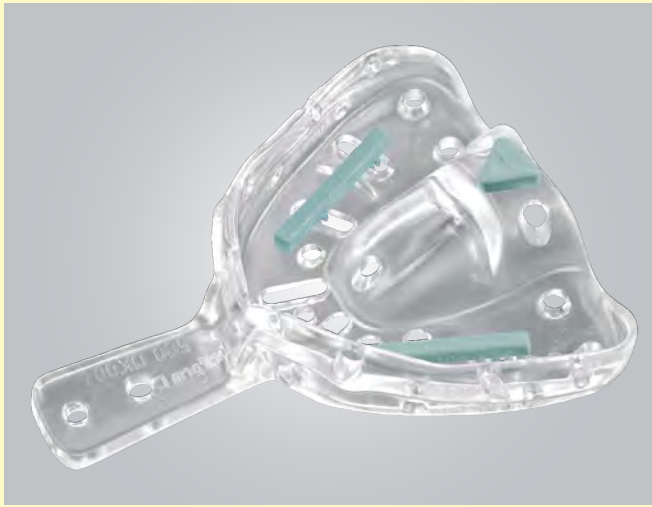




breciform D impression tray

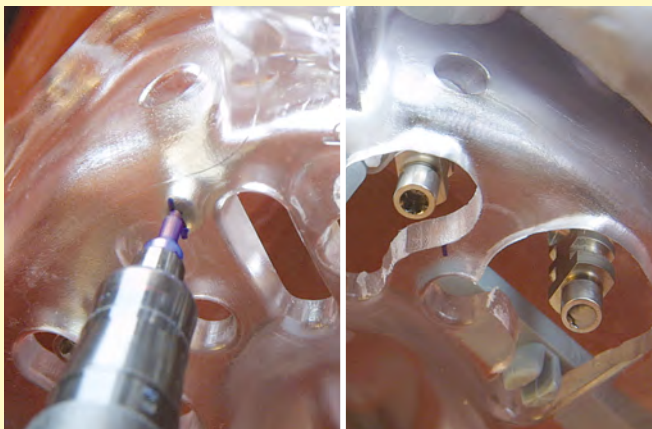
The foundation for success

The choice of impression tray is pivotal for the quality of the impression. This was proven in practice by a scientific investigation at the University of Basel. The breciform D impression tray significantly outperformed the metal trays and individual trays.



High efficiency:

Costly and time-intensive cleaning of the tray is avoided by using a single-use tray. Storage is made easier, as there is no lengthy tracking of the tray, whether this is by you, your partner or the dental technical laboratory. There is no lengthy and expensive manufacturing of an individual tray.



Especially in implantology, the requirements for precision of the impression are particularly high, as the results of inadequate impressions can massively increase the amount of work for prosthetic restorations, whether separating the finished works or time-consuming grinding.

Scientifically-proven precision

A study at the University of Basel arrived at the following conclusion: "Differences between the tray types both in the measurement section range as well as in the die diameter could be determined. The metal tray provided the least accurate results. The plastic tray from bredent frequently achieved the best result; the individual tray came in second place, due to the constancy of the values achieved." *

*Dissertation from the University Dental Clinics at the University of Basel "Individual tray versus conventional tray - Effects on the dimensional stability of models" by Gabrielle Widmer.

Optimal hygiene:

The optimum result in terms of hygiene is ensured by the use of a single-use item. Offer your patients this service.

Rapid open impression taking

The position of the implants can be identified easily and the tray is therefore simple, quick and safe to customise.



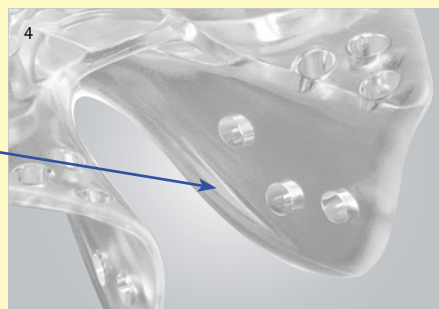
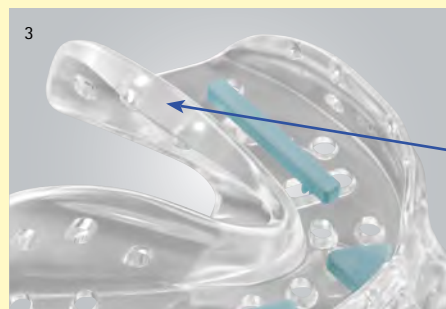
breciform D impression tray

Simple, quick and precise in application



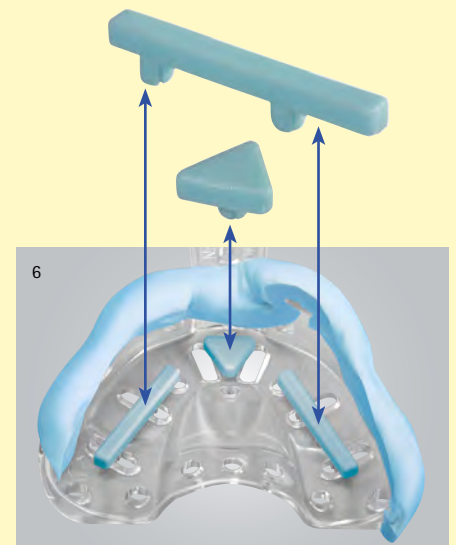
Perfect ergonomy

Work during impression taking is facilitated and precision improved thanks to the wide handle plates, enabling the base to be positioned for successful prosthetic restoration.



Comfortable for patients

Thanks to optimal tongue support and rounded edges, stress for the patient is avoided as much as possible.



With stops for dentulous jaws

Triangular and bar-shaped sterilisable stops enable dentulous jaws to be modelled safely and precisely. They enable individual edge designing with putty soft kneading silicone, so that pressing through the impression is safely prevented.

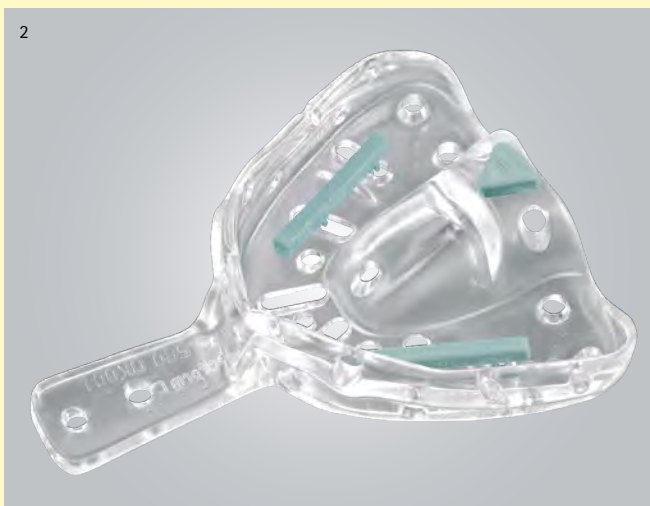
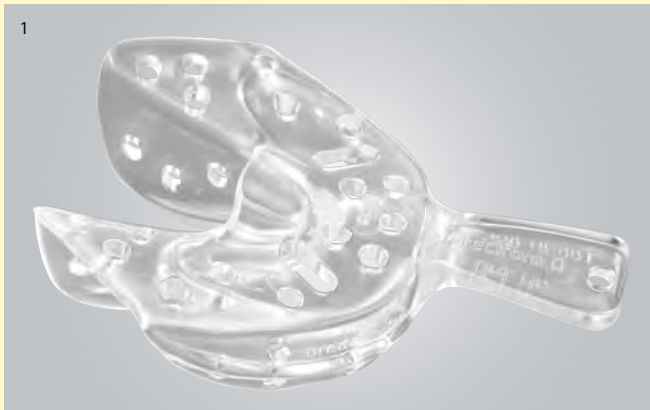


breciform adhesive

breciform adhesive ensures optimal adaptation of the impression materials, which results in maximum precision.



breciform D impression tray



Material properties

- ▶ High mechanical rigidity and strength
- ▶ Dimensionally and pressure stable

Single-use breciform D impression tray

Starter set

10 trays each for the maxilla/mandible

Sizes S, M, L and XL

10 breciform D triangular stops

10 breciform D bar-shaped stops REF 580 UOTS S

Single-use breciform D impression tray

50 pieces of each

Maxilla size S REF 580 OK00 S

Maxilla size M REF 580 OK00 M

Maxilla size L REF 580 OK00 L

Maxilla size XL REF 580 OK00 XL

Single-use breciform D impression tray

50 pieces of each

Mandible size S REF 580 UK00 S

Mandible size M REF 580 UK00 M

Mandible size L REF 580 UK00 L

Mandible size XL REF 580 UK0 XL



breciform D triangular stop

(sterilisable)

50 pieces REF 580 0003 6

breciform D bar-shaped stop

(sterilisable)

50 pieces REF 580 0003 7

breciform adhesive for A silicone

10 ml REF 580 0004 0



brecision implant impression materials



brecision implant heavy

The new brecision implant heavy is specially designed for the requirements of implantology. When taking an impression using the open method, it fixes the implant impression posts reliably and in the case of closed impression taking, it enables secure repositioning of the impression posts.



brecision implant light

For taking impressions in aesthetically demanding areas, brecision implant light creates a realistic reproduction with a high level of image precision thanks to its thixotropy. It is therefore the ideal corrective material for taking double-mix impressions and corrective impressions.



Can be used flexibly:

Single-phase impression taking



Single-phase impression taking for work without a high aesthetic requirement, e.g. edentulous jaws, free-end situations, opposing bite, etc., is carried out freely and easily with brecision implant heavy.



Double-mix impression taking



In the case of work with a high aesthetic requirement and in which the soft tissue situation must be modelled very precisely, double-mix impression taking using brecision implant heavy and brecision implant light is recommended.



Corrective impression taking



If corrective impression taking is desired, the initial impression is taken using putty soft, which combines very well with the corrective material brecision implant light for taking the second impression.





Impressions

brecision implant impression materials



brecision implant heavy

Impression material, blue
1 x 380 ml
5 x dynamic mixer
1 x bayonet ring, yellow
REF 580 BH38 0



brecision putty soft

kneadable base material
250 ml base (grey)
250 ml catalyst (white)
2 measuring spoons
REF 580 0002 4



brecision implant light

Impression material, orange
2 x 50 ml
10 mixing cannulas, yellow
10 intra-oral tips
REF 580 BL05 0



Accessories



Mixing cannulas, pink
40 pieces
REF 580 0002 2



Mixing cannulas, yellow
40 pieces
REF 580 0003 2

12 pieces
REF 320 0045 1



Intra-oral tips, white
40 pieces
REF 580 0003 4



Intra-oral tips, yellow
40 pieces
REF 580 0003 3



Contouring tip
wide
40 pieces
REF 580 0002 3



Dynamic mixer,
yellow for 5:1 system
40 pieces
REF 580 0011 2



security-bite blue bite registration



The thixotropic property of the security-bite blue bite registration material, based on A-silicone, can be adapted to the row of teeth without dripping and therefore in a targeted manner. The high Shore A hardness of 90 enables dimensionally stable bite registration and therefore ensures a reproduction that is true to the original, without bending.



security-bite blue
2 x 50 ml cartridges
12 mixing cannulas, pink
12 contouring tips - wide
REF 580 0002 0

Impression cutter

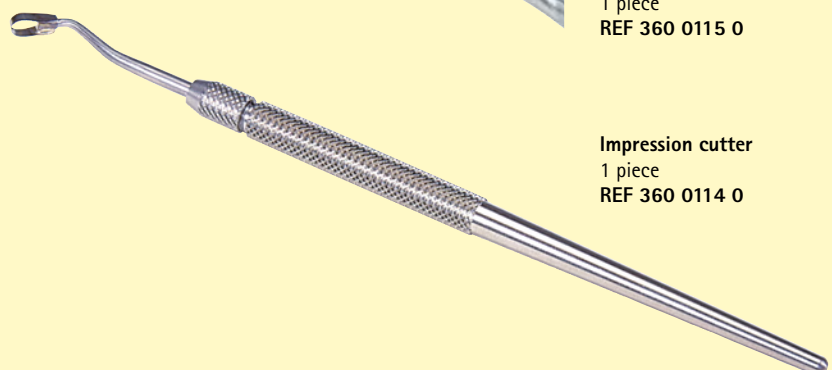
Undercuts or drainage channels can be easily and specifically removed using the scalpel-sharp loop blade.



The scalpel-sharp loop blade allows cutting even in areas difficult to access.



Loop knife
1 piece
REF 360 0115 0



Impression cutter
1 piece
REF 360 0114 0



Impressions

Dentaclean impression and prosthesis disinfection

Disinfection with Dentaclean impression and prosthesis disinfection prevents the transmission of viruses, bacteria and fungi from patients to the laboratory, and therefore increases your protection against infection.



Disease pathogens can be transmitted to the laboratory by impressions.

Tested and approved by the Institute for Hospital Hygiene and Infection Control [Institut für Krankenhaushygiene und Infektionskontrolle], Gießen,

Dentaclean impression and prosthesis disinfection is listed by the DGHM (German Society for Hygiene and Microbiology) [Deutsche Gesellschaft für Hygiene und Mikrobiologie].



After using Dentaclean impression and prosthesis disinfection, active viruses, bacteria and fungi can no longer be detected.



Impression and prosthesis disinfection
1000 ml concentrate
yields 10 litres of ready-to-use solution
incl. 25 shipping bags
REF 520 0100 6

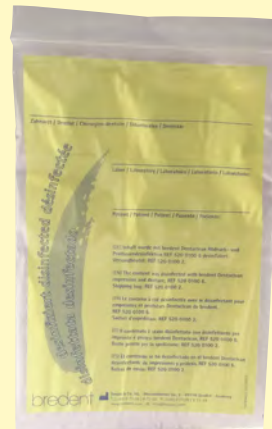
Shipping bags

The shipping bags have already been labelled with the word "disinfected".



A separate bag for order notes is also supplied so they do not become damp.

The shipping bags can be pre-printed with your company logo on request.



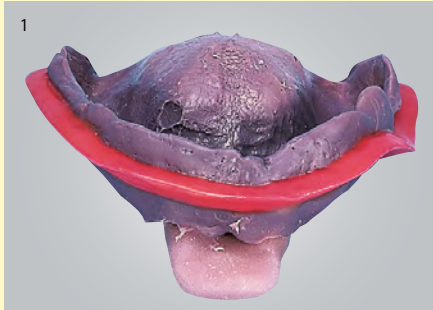
Shipping bags, neutral
200 pieces
REF 520 0100 2

Shipping bags with your company logo on request
from 1,000 pieces



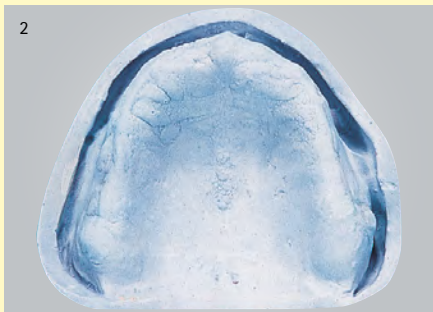
Protective wax for functional margins

For the manufacture of perfect functional margins.



The ready-to-use, prepared functional tray provides the safe pre-requisite for precise models with a functional margin.

The slightly sticky, flexible protective wax for functional margins enables simple and safe positioning onto each impression material. Final fixation is carried out by waxing up. Accordingly, uniform design of functional margins is possible.



Uniform and ideal functional margins in the model guarantee perfect positioning of the prosthesis.



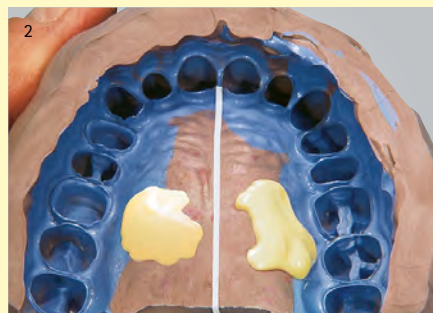
Protective wax for functional margins
red, 175 g
REF 430 0150 0

Silicone and wax surface tension reducing agent

Enhances the flow properties of plaster for silicone impressions.



The spray head of the spray bottle facilitates even surface wetting with silicone and wax surface tension reducing agent.



The reduced-tension silicone surface (left) visibly improves the flow properties of the plaster.



The silicone and wax surface tension reducing agent creates a homogeneous plaster surface. This ensures precise dental technical work.



Silicone and wax surface tension reducing agent
750 ml
REF 540 0070 5



Plastic spray bottle
125 ml
REF 540 0075 0

Spraying on the silicone and wax surface tension reducing agent improves the flow properties of plaster for silicone impressions. The impression must be dry before casting the arch.



ecovac vacuum mixing system

Precision-fit restorations obtained through optimal use of material properties.



The user-friendly and compact design simplifies work and reduces sources of errors. A powerful and maintenance-free vacuum pump, adjustable in two different levels (15 mbars, 200 mbars), ensures bubble-free mixing of materials and results in a perfect casting surface.

Stirring time and speed can be adjusted continuously to allow correct processing of different materials.

ecovac (230 V)
REF 140 0093 0

(wall mounting, without cup and stand)
1 x mains cable
1 x replacement filter
1 x drilling template for wall mounting
4 x screws and wall plugs for wall mounting

ecovac base
1 piece
REF 210 0045 0



ecovac mixing spiral

The mixing spiral takes up the components to be mixed from all areas of the mixing cup and stirs them horizontally and vertically. No unmixed materials remain on the bottom of the mixing cup, which may cause different expansion of the material later on.

All features and components listed provide increased reliability, lead to improved fit when preparing dental restorations and prevent time-consuming reworking.

Mixing spiral

50 ccm	REF 140 0R94 5
250 ccm	REF 140 0R94 0
750 ccm	REF 140 0R94 2
1000 ccm	REF 140 0R94 3



ecovac mixing cups

The smooth inner surface of the stainless steel mixing cup prevents any material or liquid residues from adhering to or depositing in scratches or undercuts. Allocation of mixing cups to different materials is therefore not required. The conical shape ensures that material which has been taken up will flow back to the centre of the mixing cup. Accordingly, the mixing ratio is retained exactly and better results can be achieved with minimal effort.

Mixing cups

50 ccm	REF 140 0B94 5
250 ccm	REF 140 0B94 0
750 ccm	REF 140 0B94 2
1000 ccm	REF 140 0B94 3



Mixing cup D
(for use with the Degussa mixing unit)
425 ml
REF 140 0B94 4

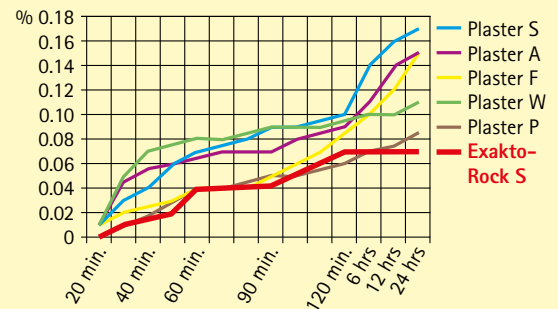


KoEx measuring device

Expansion stop helps ensure an accurate fit.

Just two hours after mixing it is possible to carry out further work as a result of the expansion stop of the plasters. This increases the accuracy of fit of the dental prosthesis.

It is not possible to think of a digital future without plasters, if only because of the high level of attention to detail and the further processing steps compared to digitally produced resin models. The expansion time and the start of modelling play a significant role in the accuracy of fit of the dental prosthesis. This is why bredent plasters are set with an **expansion stop after two hours at a maximum of 0.08%** (Exakto-Rock S and Thixo-Rock). The dental technology work is generally started after this period of time. Any further expansion would make the accuracy of fit of the dental prosthesis produced significantly worse, increasing the monitoring and fitting time at the practice.



Measurements are carried out with the precise KoEx measuring device, featuring a digital dial gauge, to carry out a simple check on the plaster's expansion. For the first time ever, an expansion measuring device can also be used to measure the contraction of impression materials to determine the link between the two materials.



KoEx measuring device
1 piece incl.
2 contraction inserts
REF 110 0148 0

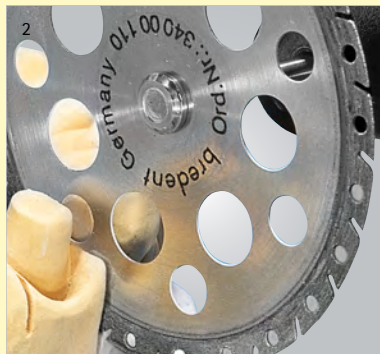
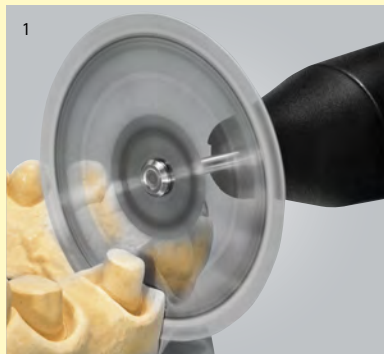
The accuracy of fit of the dental prosthesis is significantly affected by the expansion of the model material. If a plaster expands from 0.08% to 0.12% as a result of a subsequent expansion, this equates to a further expansion of 50%. In large-span bridge constructions, this can lead to inaccuracies which are extremely noticeable in the fixed implants.





Giflex-TR

Perforated design for controlled sawcuts.

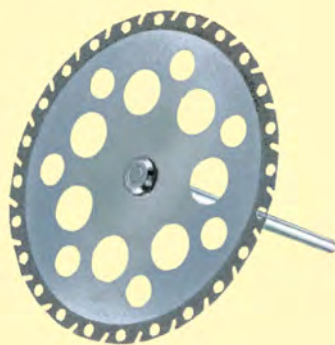


Giflex-TR is a disc that features diamond-coating on both sides and is particularly suitable for cutting plaster and resin dies. Calculated chip spaces in the area of the diamond coating ensure quick removal of the grinding dust and increase the cutting performance of the disc. Giflex-TR allows quick, smooth and reliable cutting of even the hardest plaster and model resin. Troublesome chattering and jamming of the disc is avoided.

Larger holes in the diamond-free section also reduce the friction heat. The disc will not overheat even if deep cuts are carried out. The punched holes also provide a clear view of the saw cut. Better visibility when cutting plaster with Giflex-TR.



Giflex-TR
Ø 25 mm
REF 340 0002 5



Giflex-TR
Ø 45 mm
REF 340 0011 0

Additional diamond discs for plaster processing in the special "Diamond tools" brochure REF 000 5310 D.

Protective chamber

The protective chamber prevents grinding dust being inhaled, protects your eyes and therefore protects your health.



Either with or without extraction connection. The extraction connection can be connected directly to the extraction device, thereby reducing the creation of dust and simultaneously providing a better view.

Protective chamber with extraction connection
Dimensions: approx. W 410 x D 350 x H 260 mm, Ø 35 mm
REF 220 0010 0

Protective chamber without extraction connection
Dimensions: approx. W 410 x D 350 x H 260 mm
REF 220 0011 0

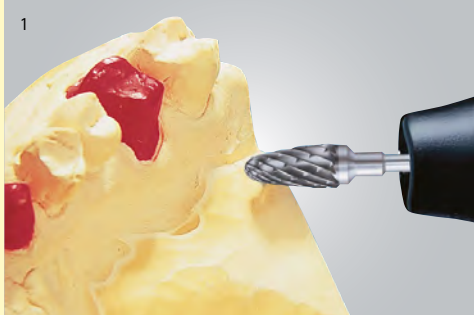
Accessories

Safety glass pane
1 piece
REF 993 0001 2



Tungsten carbide tools for plaster processing

Quick shaping and smooth surfaces for all types of plaster.

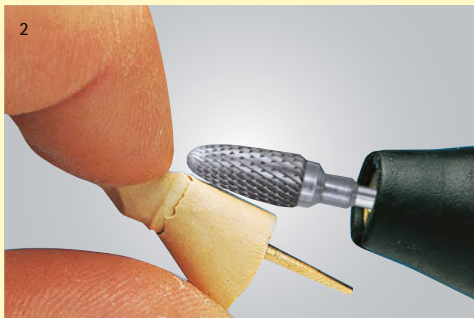


The super-coarse cross-cutting edge allows removal of large quantities of any type of plaster.

The relief protects the sharp blade against breakage of the edges. This way the service life of the relief tools is three times longer than that of comparable burs. The processed surface is also smoother and a lustre is applied.



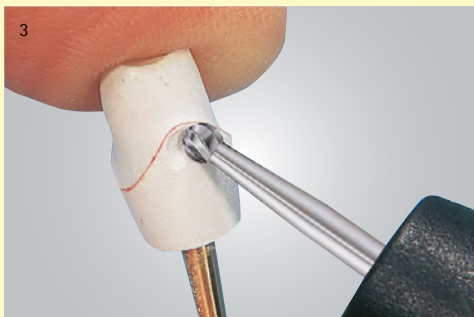
Tungsten carbide bur
1 piece
REF H263 SH 60



The coarse cutting edge allows finer cuts and avoids splintering of the plaster.



Tungsten carbide bur
1 piece
REF H263 GH 60



The cross-cutting edge produces smooth and precise grooves.



Rapidly microbur
1 piece
REF H001 NH 31



The cylindrical shape enables a horizontal groove to be created, which improves the visibility of the preparation margin.



Preparation bur
1 piece
REF H263 GH 30

Additional tungsten carbide tools for plaster processing can be found in the special "Tungsten carbide tools" brochure REF 000 753G B.



Exakto-Rock S

Exakto-Rock S – formaldehyde-free, class IV super-hard plaster

The raw materials for Exakto-Rock S are synthetic. This means that a consistently high quality of end product is achieved, which in turn guarantees a reproducible model manufacture in the laboratory.

- Extremely low expansion values of just 0.08% with an expansion stop after two hours for a dental prosthesis with an accurate fit
- High compression strength offers the highest level of edge stability
- Smooth surface ensures significant attention to detail
- Excellent surface recognition in all scanners offers the optimum working basis
- An optimum light reflection provides exact readability and simplifies the work process

Formaldehyde-free

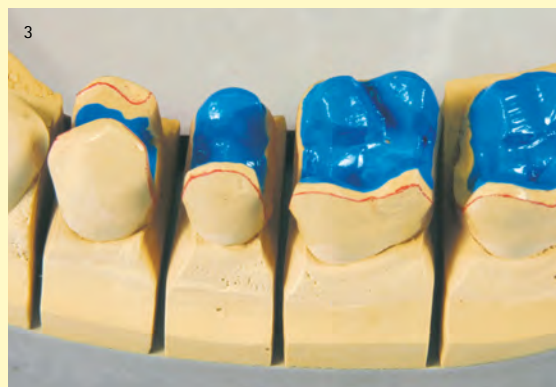
The formaldehyde-free formula of the plaster offers processing which is healthy for the dental technician and enables holistic dental prostheses free from harmful substances to be manufactured.

Can be scanned

The best possible light reflection of all components enables perfect readability in all scanners. This reduces the digital reworking and prevents inaccuracies in the digital manufacture of dental prostheses.

Precise

The distinctive precision of the class IV super hard plaster for the toughest requirements offers everything you need for success. The material properties are tailored to dental technology needs.





Exakto-Rock S

Exakto-Rock S for the digital world

High-quality work requires a first-class basis



The super-hard scannable class IV plaster offers exact readability for all components in all scanners due to the optimum light reflection. This reduces the digital reworking and prevents inaccuracies in the digital manufacture of dental prostheses.



The perfect reproduction of the surface in the scanner simplifies construction and forms the basis for a high-quality dental prosthesis with an accurate fit. Final expansion is achieved after 2 hours – this guarantees rapid further work at the planning stage.

Exakto-Rock S for high-precision models

The minimal expansion permits the manufacture of exact arch models or master models



An excellent processing time of six minutes enables stress-free casting, even of several impressions at the same time.



The high level of thixotropy makes building up the plaster easy and therefore enables the manufacture of workable models. The accuracy of the plaster and the smooth surface it creates results in precise work.

Technical data for Exakto-Rock S

Colour	brown, ivory
Mixing ratio:	100 g / 20 ml distilled water
Soaking time	20 sec.
Mixing time by hand	20 sec.
Mixing time under vacuum	40-60 sec.
Processing time	5-6 min.
Setting time (Vicat time)	approx. 10 min.
Demoulding after	40 min.
Compression strength after 1 hour	over 60 MPa
Compression strength after 24 hours	85 MPa
Hardness after 1 hour (Brinell)	200 MPa
Hardness after 24 hours (Brinell)	280 MPa
Linear expansion after 2 hours	< 0.08% (no further expansion)



Ivory colour:

1 x 2 kg	REF 570 OSE5 2
5 x 2 kg	REF 570 OSE5 1
10 x 2 kg	REF 570 OSE5 0



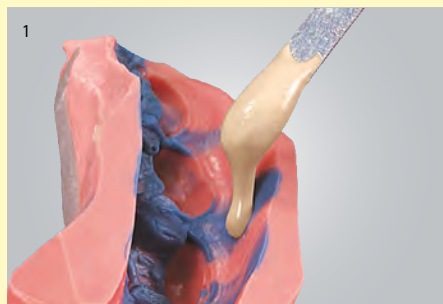
Brown colour:

1 x 2 kg	REF 570 OSB5 2
5 x 2 kg	REF 570 OSB5 1
10 x 2 kg	REF 570 OSB5 0



Thixo-Rock

Class IV super-hard plaster with excellent thixotropy and optimal flow characteristics

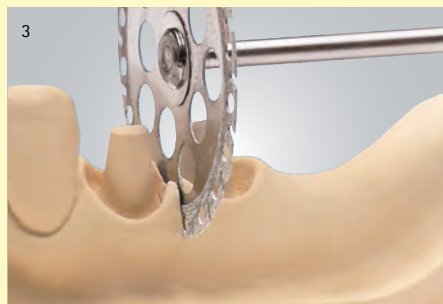


Thixo-Rock provides a very high level of stability on the spatula and an easy-flowing consistency on the vibrating machine. Processing is easy and clean.



The outstanding processing width favours bubble-free casting of a higher than average number of impressions with only one mix.

- very good stability enables a simple construction
- exact exposure of the preparation margins is offered by the high edge stability, which enables sawing with no risk of splitting
- sufficient processing width for stress-free casting of several impressions



Sawing and grinding of the arches is carried out with no splitting.



The preparation margins of the dies are not damaged during processing. No breakage of the edges when demoulding. This leads to accurately fitting results.

Technical data for Thixo-Rock

Colour	brown, ivory, grey
Mixing ratio:	100 g / 20 ml distilled water
Soaking time	20-30 sec.
Mixing time under vacuum	60 sec.
Processing time at 23°C	5-6 min.
Setting time (Vicat time)	approx. 10 min.
Demoulding after	45 min.
Compression strength after 1 hour	over 60 MPa
Compression strength after 24 hours	85 MPa
Hardness after 1 hour (Brinell)	200 MPa
Hardness after 24 hours (Brinell)	280 MPa
Linear expansion after 2 hours	< 0.08% (no further expansion)



Brown colour:

1 x 2 kg REF 570 0005 2
5 x 2 kg REF 570 0005 1
10 x 2 kg REF 570 0005 0



Ivory colour:

1 x 2 kg REF 570 00E5 2
5 x 2 kg REF 570 00E5 1
10 x 2 kg REF 570 00E5 0

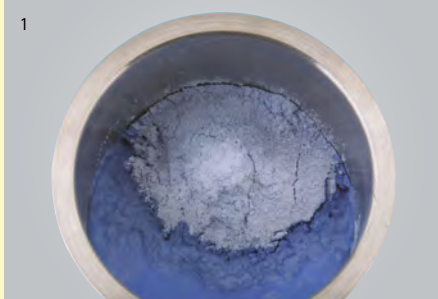


Grey colour:

1 x 2 kg REF 570 00G5 2
5 x 2 kg REF 570 00G5 1
10 x 2 kg REF 570 00G5 0



Fluid-Rock



Mix Fluid-Rock base plaster in a mixing ratio of 100 g powder to 25 ml distilled water for a low-viscosity consistency.

The thin-consistency class IV base plaster Fluid-Rock enables bubble-free casting of the base shape. This enables the production of saw-cut models with an accurate fit. The light blue colour can be easily combined with all arch plasters.



Fluid-Rock base plaster is cast directly into the model former without using a vibrating machine. Ideal flow characteristics enable bubble-free results.

Technical data for Fluid-Rock

Colour	blue
Mixing ratio:	100 g / 25 ml dist. water
Processing time	approx. 6 min. at 18 to 20°C
Setting time (Vicat time)	approx. 11 min. at 18 to 20°C
Compression strength after 1 hour	48 N/mm ²
Compression strength after 24 hours	55 N/mm ²
Setting expansion	< 0.06% (no further expansion after 2 hours)



Cleaner models facilitate the modelling process and do not distract from more important issues.



Low-designed expansion ensures consistent quality when manufacturing the model. Perfectly matched with Exakto-Rock S super-hard plaster.

Colour blue:

1 x 2 kg	REF 570 0FB5 2
5 x 2 kg	REF 570 0FB5 1
10 x 2 kg	REF 570 0FB5 0



Model manufacture

Arti-Rock

The snow white articulation plaster with very low expansion enables precise articulation of the models.

This avoids an unwanted increase in the bite, significantly reducing the grinding times. The short setting time enables an ideal fixation of the models and rapid further work.



A precise impression can be manufactured for matrices thanks to the flexible processing of the plaster. The final hardness of Arti-Rock enables excellent processing.



The rapid setting time and the low level of expansion are the perfect pre-requisites for accurate relining.

Technical data for Arti-Rock

Colour	white
Mixing ratio:	100 g / 40 ml dist. water
Processing time	approx. 3 min.
Setting time (Vicat time)	5 min.
Compression strength according to DIN	7.2 MPa
Expansion	0.01% after 20 min. 0.02% after 48 hours

The low level of expansion, at only 0.02%, guarantees an accurate model position when aligning according to the anatomic situation. This results in precise work and short grinding times.

Perfect stability and special adhesive capacity simplify mounting in the articulator and ensure safe retention of the models.



Colour white
1 x 4 kg REF 570 0AR0 4
1 x 18 kg REF 570 0AR1 8



Accessories



Master x-tray magnets
25 pieces
REF 360 0127 2



Thermo-syringe

Fixing and bonding that can be dissolved quickly without any residues for any type of model situation.



After heating, the adhesive resin wax is applied directly to the adhesion site using the thermo-syringe. This ensures firm bonding.



The adhesive resin wax can be applied to any material, it can be removed afterwards from the objects with no residue.

The adhesive resin wax can be moulded by heating and easily placed on the models.



Accessories



Adhesive resin wax
250 g pack
REF 510 0070 1

1000 g tub
REF 510 0070 0

Thermo-syringe
1 piece
REF 110 0121 1

Adhesive wax

Selected components guarantee stable adhesion of all materials.



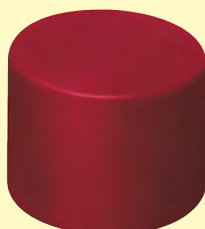
The high degree of stability after cooling enables the manufacture of models without any additional reinforcement.



The excellent flow properties ensure the hold of models prior to casting in plaster thanks to a secure bond.



The balanced composition enables the adhesive wax to be steamed off or boiled off with no residue.



Adhesive wax
dark red
25 g
REF 510 0040 0



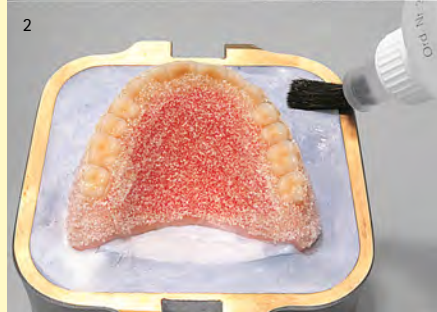
Model manufacture

Plaster insulating liquid

For reliable separation of plaster against plaster.



The insulating liquid soaks into the plaster and seals the surface without layering. The brush pen enables quick application.



The plaster insulating liquid ensures damage-free separation of both halves of the flasks.

An alginate-based plaster insulating liquid that guarantees gap-free fitting. For the highest level of precision and damage-free separation for saw-cut models and articulation.



Accessories



Plastic spray bottle
125 ml
REF 540 0075 0



Brush pen
20 ml
REF 540 0072 0



Brush pen
125 ml
REF 390 0033 0



Plaster insulating liquid
750 ml
REF 540 0013 5



Multisil-mask soft

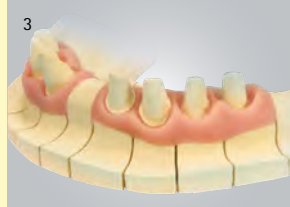
Accurate reconstruction of the gingival sections.



Aesthetic



Informative



Rational

Quick and economical processing with the cartridge system and the especially adjusted silicone allow trouble-free direct application into the impression or the matrix. The natural colour of the gingival mask supports perfect shade determination of the veneer. Overdimensioning of edge design is detected immediately.

Processing



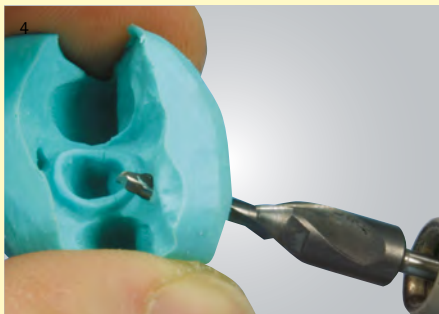
The gingival situation...



...is modelled on the unsawn saw model using hap-tosil D kneading silicone and the arch is then sawn.



The sawcuts are coated with wax.



Inlet and outlet openings are drilled into the matrix using the matrix drill and Multi-Sep is applied.



The dispensing device with cartridge and cannula is held at the opening. Whilst applying the material from the dispensing device, the matrix is fixed on the model...



...to obtain a correctly-positioned gingival mask.



Multisil-mask soft
50 ml cartridges
REF 540 0104 7



Mixing cannulas
Size 1 / blue
REF 320 0045 0



Multisil-Sep
10 ml bottle
REF 520 0100 3

Assortment

2 x 50 ml Multisil-Mask soft
24 mixing cannulas
10 ml Multisil-Sep
REF 540 0104 1

Accessories



Multisil dispensing device
1 piece
REF 320 0044 0



Multisil-mask hard

Special resin for hard gingival masks with stable consistency and ideal processing properties.



The hardness enables torsion-free and accurate placement on the model. The Vario-Stud-Snap vks-oc system is used for fixation. Divergent implants are aligned using the implant compensating cones developed by bredent.



1 The margin fit of the individual abutment to the implant can be checked at all times.



2 Multisil-Mask hard permits reliable adapting of individual attachments and framework designs.



3 Accurate placement of pontics can be easily achieved with Multisil-Mask hard.

Processing



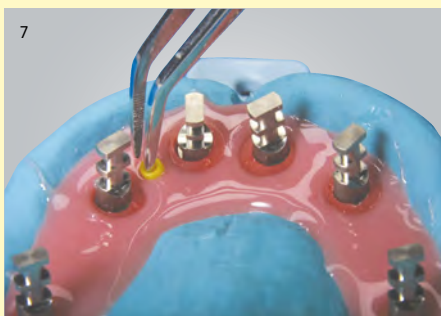
4 Initial situation of the implant restoration with laboratory abutments.



5 Place the implant offset cones on the laboratory analogues so that the wide side is in the angled area.



6 Fill Multisil-Mask hard around the laboratory abutments at the level of the compensating cones.



7 Use tweezers to insert the matrices vks-oc into the soft resin immediately after injecting the resin.



8 Trim the gingival mask from the basal side to obtain a straight margin.



9 Apply Vaseline to insulate the gingival mask against the plaster.



Multisil-mask hard



"Snap" the metal transfer patrices into the matrices.



Cast the impression using Exakto-Rock S and then...



...box the impression with the Master-Split model system.



Use an instrument to lift the gingival mask carefully off after boiling out the compensating cones.



The gingival mask is safely retained by the vks-oc matrices and can always be repositioned in an accurate manner.



The finished gingival mask. Apply transparent die varnish to protect the gingival mask against scratches and to improve the aesthetic appearance.



Multisil-mask hard
50 ml cartridge
1 piece
REF 540 0113 3

Mixing cannulas, blue
12 pieces
REF 320 0045 0

Assortment

Multisil-mask hard
2 x 50 ml Multisil-Mask hard in cartridges
24 pieces mixing cannulas
1 set of implant compensating cones
8 metal transfer patrices, vks-oc 1.7 mm
8 matrices, vks-oc 1.7 mm
REF 540 0113 4

Implant compensating cones
20 pieces, 4 pieces of each
3.5; 4.0; 4.5; 5.0; 5.5
REF 430 0739 2

Accessories



Matrices
vks-oc 1.7 mm
8 pieces
REF 430 0659 0



Metal transfer patrices
1.7 mm
8 pieces
REF 430 0662 0



Multisil dispensing device
1 piece
REF 320 0044 0



Light-curing die varnish
transparent
20 ml
REF 540 0100 6



Implant compensating cones

Ø 3.5 mm, 12 pieces
REF 430 0703 5
Ø 5.0 mm, 12 pieces
REF 430 0705 0

Ø 4.0 mm, 12 pieces
REF 430 0704 0
Ø 5.5 mm, 12 pieces
REF 430 0705 5

Ø 4.5 mm, 12 pieces
REF 430 0704 5



Model manufacture

Exakto-Form

Model resin for accurate reproduction and maximum edge stability in five different colours.



In the case of impression materials based on polyurethane, to avoid a chemical bond, the impression must be sprayed in advance using the Exakto-Form insulating liquid.



Prior to mixing, each component must be stirred so that a homogeneous mixture is obtained. Mix the sediment completely.



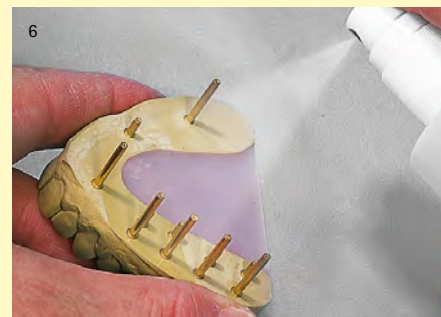
Pour component B into component A and empty the tin completely. Mix Exakto-Form for approx. 30 seconds, until a uniform colour is achieved.



Two tins of Exakto-Form (100 g) are sufficient to produce approx. 2-3 complete arches.



The material can be removed after just 30 minutes. Final hardness is achieved after 90 minutes and the material can then be ground.



If a base for the model is to be produced with Exakto-Form, the model must be insulated in advance with Exakto-Form insulating liquid.



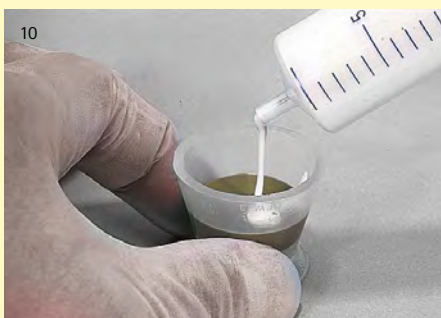
Due to its high edge stability Exakto-Form is perfectly suitable for precision-fit crown and bridge-work.



Any technique can be used for sawing Exakto-Form models. Familiar working processes do not need to be changed.



If smaller quantities are used, fill component A and B into a separate syringe.



Fill equal portions of Exakto-Form into a silicone cup (approx. 2 ml each for one die) and mix to obtain a homogeneous consistency. Please note: material in the syringes must be processed within 5 days.



Pour Exakto-Form into the impression. The excellent flow properties prevent the formation of bubbles even in impressions with thin edges.



The hardened resin can be drilled and ground. The stability prevents changes to the dimensions and guarantees precise models.



Exakto-Form



**Component A
yellow**
1 x 50 g
REF 520 0017 8



**Component A
grey**
1 x 50 g
REF 520 0017 5



**Component A
light ivory**
1 x 50 g
REF 520 0017 6



**Component A
signal blue**
1 x 50 g
REF 520 0017 7



**Component A
olive green**
1 x 50 g
REF 520 0017 4



Component B
1 x 50 g
REF 520 0017 3

Assort- ments

6 x 20 g A	6 x 50 g A
6 x 20 g B	6 x 50 g B
yellow	yellow
REF 520 2028 4	REF 520 0028 4
light ivory	light ivory
REF 520 2028 2	REF 520 0028 2
olive green	olive green
REF 520 2028 0	REF 520 0028 0
grey	grey
REF 520 2028 0	REF 520 0028 3
signal blue	signal blue
REF 520 2028 1	REF 520 0028 1

Accessories



Stirring sticks
250 mm long
100 pieces
REF 390 0031 0



Measuring syringes
20 ml, 50 pieces
REF 390 0036 0



**Exakto-Form
Insulating Liquid**
125 ml
REF 520 0021 0

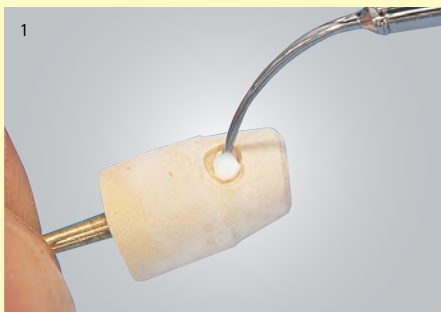
Mixing cups
120 ml
100 pieces
REF 390 0030 0



Model manufacture

Undercut wax

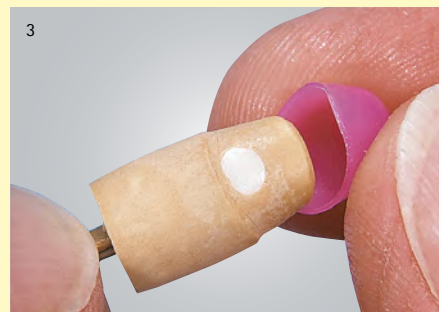
Precise blocking out of all cavities on the die.



The high adhesive capacity of the undercut wax provides reliable hold in the cavity.



Low shrinkage and optimum scraping capacity simplify blocking out.



The high melting temperature also allows the use of the wax below immersion wax copings.



Undercut wax
25 g
REF 510 0048 0

The undercut wax has a high melting point and is therefore perfectly suited for blocking out cavities. No bond with the dipping wax is formed.

Litebloc UV

Light-curing resin for blocking out cavities and building up dies.



The screwable tube allows application of the desired amount.



The high level of stability enables the cavities to be filled in a targeted manner.



After hardening in the light curing device, Litebloc UV can be coated with any type of die varnish.



Litebloc UV
3 g
REF 520 0098 0



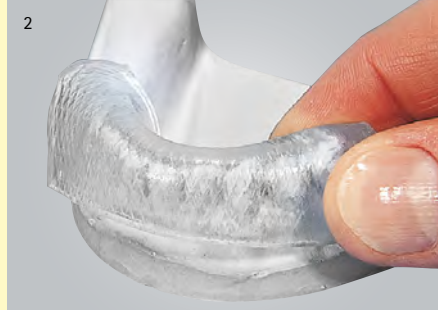
Transblock

The transparent block-out material for fast and systematic working.

The stability of Transblock results in uniform layer thicknesses when adapting and can be adapted individually using a scraper where needed.



Any desired size or shape of Transblock can be produced with the help of an instrument or scissors.



The high degree of flexibility and low resilience facilitate positioning on the model.



Due to its stability, a uniform thickness is retained during the adaptation. If required, the thickness can be adjusted individually using a scraper.



The transparency of Transblock allows to check the thickness of the area that has been blocked out. This way precisely prepared models for individual trays are obtained.



Transblock
250 g
REF 540 0114 9

Dentaclean Plaster Removing Agent / Plaster Removing Agent Speed

Ready-to-use solution to remove plaster residues from all surfaces.



Hard plaster particles are gently removed from the mixing cup quickly and without damage.



Gentle and fast plaster removal protects the resin surface and the colour.



**Dentaclean
Plaster Removing
Agent**

1000 ml
REF 520 0011 9

2500 ml
REF 520 0099 3

**Dentaclean
Plaster Removing
Agent Speed**

1000 ml
REF 520 0101 0

2500 ml
REF 520 0099 4

Dentaclean Plaster Removing Agent is available in two types: Normal and Speed. The ready-to-use solution removes plaster residues from all surfaces. If the work needs to be carried out quickly, Dentaclean Plaster Removing Agent Speed is available.

bredent



Model manufacture

Retention pins

The retention pins already have grooves to guarantee a secure hold when manufacturing resin dies.



Paint the crowns with a thin coat of Vaseline.



The excellent modelling properties enable targeted filling of the crowns in a very short amount of time.



Pi-Ku-Plast HP 36 has a short setting time. The retention pins can therefore be pushed directly into the resin.



Pi-Ku-Plast HP 36 creates accurate and particularly stable resin dies in a very short amount of time.



Retention pins
100 pieces
REF 360 0000 1
500 pieces
REF 360 0000 2

Accessories

Pi-Ku-Plast HP 36 – For precision-fit and stable resin dies in next to no time.



Resin dies are the perfect basis for a precision-fit dental restoration.



The high strength of Pi-Ku-Plast HP 36 creates a stable base for all milling work.



Monomer blue 100 ml REF 540 0021 3	Monomer transparent 100 ml REF 540 0021 0
Monomer yellow 100 ml REF 540 0021 1	Cleaner 100 ml REF 540 0022 4
Monomer orange 100 ml REF 540 0021 2	Polymer 85 g REF 540 0021 5
Monomer red 100 ml REF 540 0021 4	

Assortment

85 g Polymer
100 ml Monomer
100 ml Cleaner
1 x brush holder
2 x brushes
3 x vessels

blue
REF 540 0021 9
yellow
REF 540 0021 7
orange
REF 540 0021 8

red
REF 540 0022 0
transparent
REF 540 0021 0

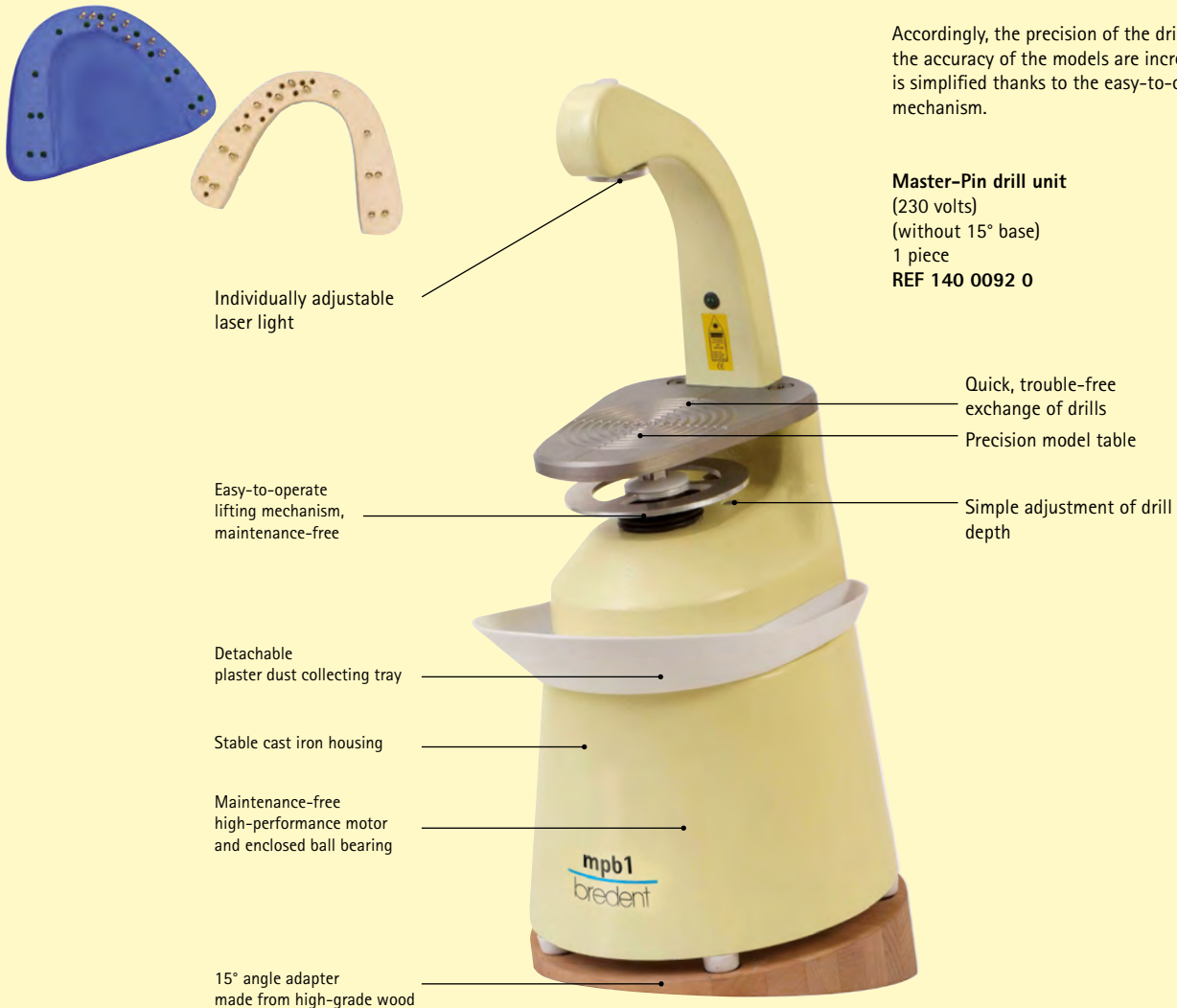


Master-Pin drill unit

The powerful, high quality and maintenance-free motor features high true running accuracy.

Accordingly, the precision of the drilled hole and the accuracy of the models are increased. Working is simplified thanks to the easy-to-operate lifting mechanism.

Master-Pin drill unit
(230 volts)
(without 15° base)
1 piece
REF 140 0092 0



Accessories



Adapter base
15° angle for ergonomic working
made from high-grade wood
1 piece
REF 210 0044 0



Tungsten carbide drill
Special drill for Master-Pin Radix-K,
Ø 2.0 mm
1 piece
REF 360 0123 3



Master-Pin Diatit tungsten carbide step drill
Standard / green
1 piece
REF 360 0119 2



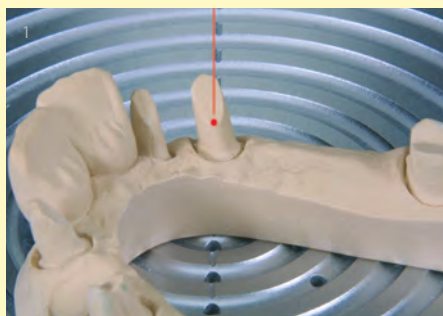
Master-Pin Diatit tungsten carbide step drill
Special / yellow
If bonding of the Master-Pin is too difficult, the Master-Pin Diatit tungsten carbide step drill special/yellow can be used to drill a larger hole. This drill is 0.01 mm larger in diameter than the Master-Pin Diatit tungsten carbide step drill standard/green.
1 piece
REF 360 0119 3



Master-Pin Diatit tungsten carbide step drill
Special / red
If the drilled hole is too large for insertion of the Master-Pin, the Master-Pin Diatit tungsten carbide step drill special/red can be used to drill a smaller hole. This drill is 0.01 mm smaller in diameter than the Master-Pin Diatit tungsten carbide step drill standard/green.
1 piece
REF 360 0119 4



Master-Pin drill unit



The diameter of the light point can be set individually; therefore anti-glare, precise focussing is possible.



Firmly mounted model table can be adjusted to the width and shape of an arch.



Guide lines on the model table enable targeted positioning of the model for precise planning of the pin holes.



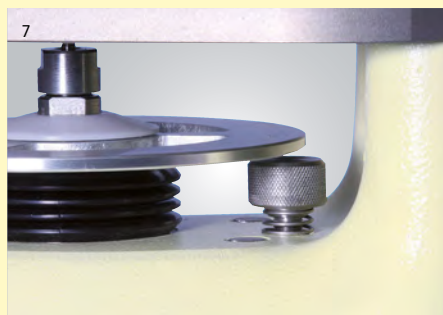
Integrated dust grooves trap the plaster particles and create the pre-requisite for an arch lying parallel.



A precise model table, mounted at a 90° angle to the drill, ensures subsequent simple removal of the arch from the model base.



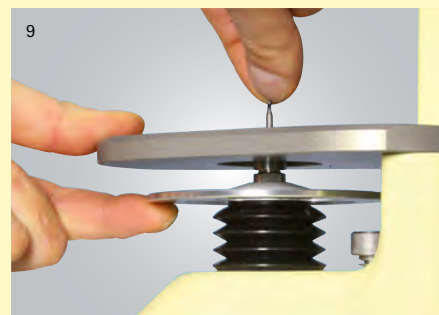
The firm hold of the arch allows precise drilling of pin holes. The drill travels to the arch without any vibration.



Simple screw mechanism for rapid and precise adjustment of the drill depth.



Drills are exchanged externally without the need to open the unit.



Any resulting plaster particles are automatically collected by the projecting collecting tray.



The unit, motor and collet remain clean and the collecting tray can be removed.

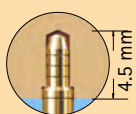


Master-Pin System

The pin system for the manufacture of the perfect sawcut models.

The low drill depth into the arch of only 4.5 mm prevents unwanted perforation of the arch. Flattening of the soft plastic sleeves is the solution for pins that are close together. The choice of plastic for the sleeves and the internal design offer smooth and controlled removal of the dies. Ideal for modelling bridges.

Your benefits at a glance



The lowest drill depth of all pins at only 4.5 mm.
Benefit: no perforation of the arch when drilling; therefore increased stability.



The Master-Pin Diatit tungsten carbide step drill is adjusted so that the boundary line for drilling of the pin is on exactly the same level as the base of the arch.



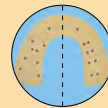
The tapering and rounding of the end of the pin enables the Master-Pin to be joined to the Master-Pin sleeve easily.



The optimised adhesive tip: the adhesive distributes itself more evenly in the drill hole and on the adhesive shaft.
Benefit: secure hold of the Master-Pin in the die.

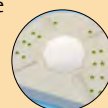


At only 11.7 mm in length, the Master-Pin sleeves enable low-rise saw models.



Incorrect Correct

The sleeve stands proud of the Master-Pin. All Master-Pins are clearly visible on the underside of the model.



The funnel-shaped design of the Master-Pin sleeve makes joining of the die segments and the model base easy.



The retention bead guarantees a perfect connection to the base plaster.

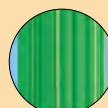


Unilateral flattening of the Master-Pin sleeve serves to protect against twisting and...



...it is the perfect space-saving solution in the case of drill holes that are close together.

Soft friction between the Master-Pin and the Master-Pin sleeve is achieved with maximum precision and stability thanks to the special surface design of the internal wall of the sleeve.





Master-Pin System



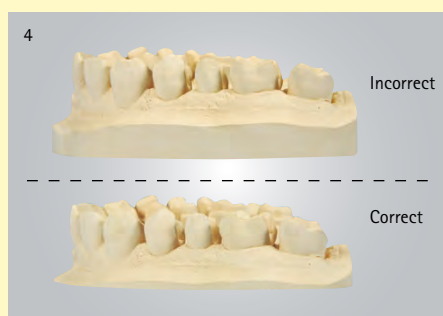
1 Weigh or measure plaster and water to ensure uniform results.



2 A thermoforming foil is placed on the cast impression. A uniform arch thickness is achieved.



3 The arch is evenly trimmed to achieve an extremely low uniform height.



4 The correct height of the trimmed arch is essential.



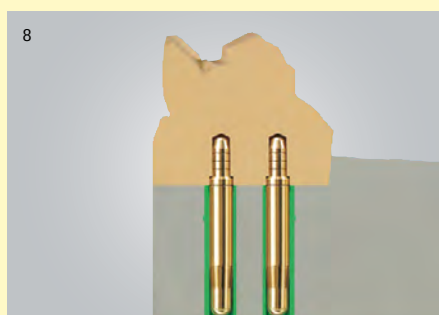
5 The trimmed surface can be optimised using wet abrasive paper.



6 The inner surface of the dry arch is ground slightly conically (6°) in relation to the base using an H263 SH 60 plaster bur.



7 The drill holes are positioned using the Master-Pin Diat tungsten carbide drill.



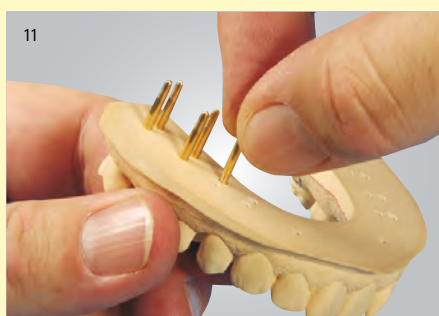
8 Positioning of the drill holes, 2 per die, is carried out beginning from a buccal direction:
1st drill hole = centre of fissure;
2nd drill hole = approx. 3 mm away in a palatal or lingual direction



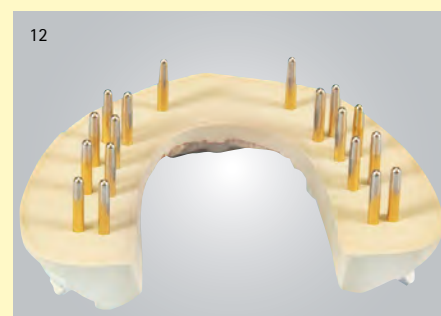
9 Correct alignment of the drill holes in the arch.



10 The upper course of the palatal or lingual ground 6° edge is marked with a red pen.



11 Bond the Master-Pins into the drill holes with precision using second adhesive.



12 Arch with bonded Master-Pins.



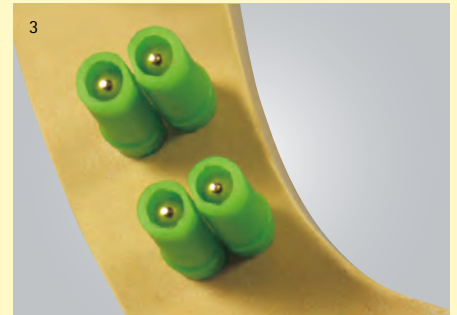
Master-Pin System



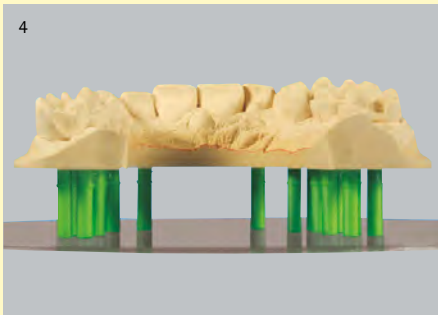
The base of the arch as well as the Master-Pins are separated using Master-Sep.



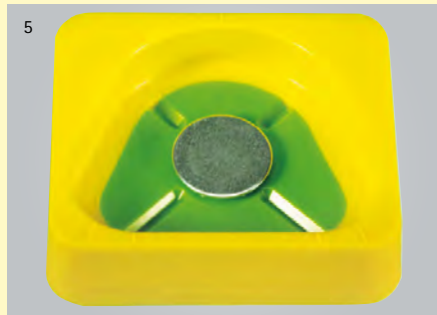
The thicker end of the Master-Pin sleeves is first placed onto the Master-Pins.



The Master-Pin sleeve can also be used easily for Master-Pins that are positioned very close together due to the lateral flattening.



The Master-Pin sleeves stand proud of the Master-Pins by approx. 0.5 mm, so that a uniform, constant height of the arch is always ensured.



The Master-Split System is used to create a base for the arch.



Place the prepared arch into the Master-Split model former and align.



The base plaster is filled up to 1 mm below the deepest point on the red marking (fig. 10).



After the base plaster has hardened, remove the model by pressing it out of the Master-Split model former.



The removed saw model is subject to Split-Cast separation: Master-Split, when creating a base, with no additional work.



The Master-Split base former is removed prior to trimming of the model.



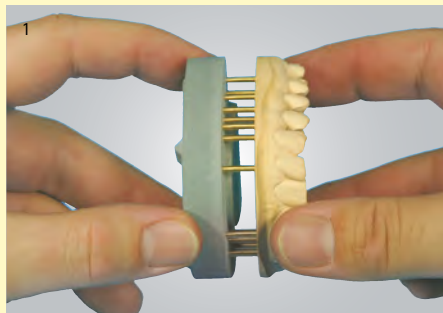
The saw model is trimmed to the smallest size possible on the trimmer.



The trimmed and dried working model.



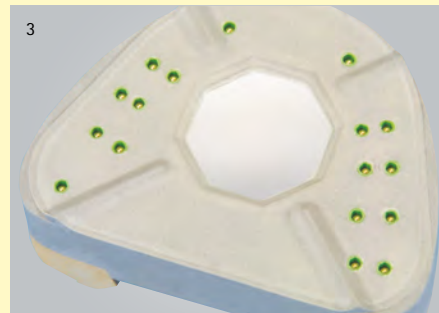
Master-Pin System



1 Remove the arch from the model base towards the pins – in parallel and without tilting.



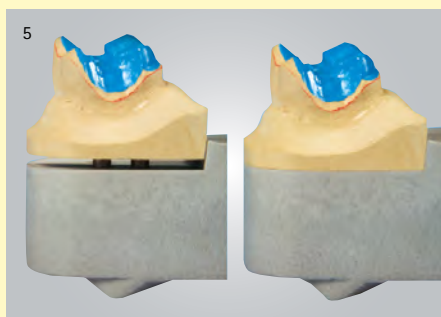
2 The thorough cleaning of the base of the arch and the model base after trimming is crucial for a high level of precision and perfect aesthetics.



3 The green Master-Pin sleeves are all the same height and can be clearly seen on the underside of the model.



4 The die segments are separated using the Giflex-TR diamond disc.



5 Ideal position and perfect fit of the working dies on the model base.



6 The insertion of interdentual, non-bonded Master-Pins is also possible.



7 Aesthetically appealing and functional models simplify daily work.



8 A beautiful and precise dental technical restoration is created on a beautiful model.



Master-Pin System

The Master-Pin system simplifies daily manufacture of models as the system components have been matched with each other.



Processing is simple and no adaptation is required. The advantages of the Master-Pin system are the shallow drilling depth and the small diameter of the drill hole. The Master-Pin sleeve slides in and out **smoothly** due to the internal surface design of the Master-Pin. This is a particular advantage for bridge restorations. Easy assembling is possible thanks to the tapering design at the end of the Master-Pin.



Master-Pins
1000 pieces
REF 360 P122 5



Master-Pin sleeves
1000 pieces
REF 360 H122 5

Assortment



402 pieces
200 Master-Pins
200 Master-Pin sleeves
1 Master-Pin Diatit tungsten carbide step drill
Standard / green
1 working box
REF 360 0122 6



2000 pieces
1000 Master-Pins
1000 Master-Pin sleeves
REF 360 0122 5

Accessories



Master-Pin Diatit tungsten carbide step drill
Standard / green
1 piece
REF 360 0119 2



Master-Pin Diatit tungsten carbide step drill
Special / yellow
If bonding of the Master-Pin is too difficult, the Master-Pin Diatit tungsten carbide step drill special/yellow can be used to drill a larger hole. This drill is 0.01 mm larger in diameter than the Master-Pin Diatit tungsten carbide step drill standard/green.
1 piece
REF 360 0119 3



Master-Sep
Special separating liquid for sawcut models
200 ml
REF 520 0029 0



Master-Pin Diatit tungsten carbide step drill
Special / red
If the drilled hole is too large for insertion of the Master-Pin, the Master-Pin Diatit tungsten carbide step drill special/red can be used to drill a smaller hole. This drill is 0.01 mm smaller in diameter than the Master-Pin Diatit tungsten carbide step drill standard/green.
1 piece
REF 360 0119 4



Master-Split Model System

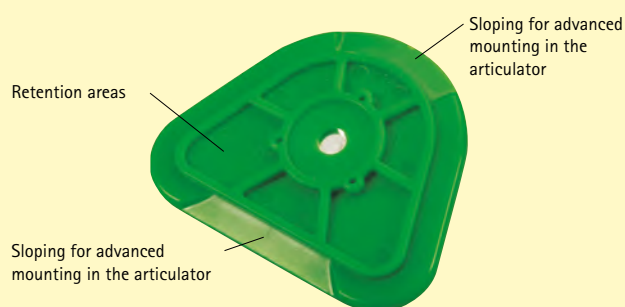
The universal model system for economical model fabrication for all dental-technical indications.

Matched with the Master-Pin System. Simple and precise manufacturing of the base with integrated Split-Cast, which requires little space due to its shape. Three different model formers for crown and bridgework, combination prostheses, implant prostheses, model casting technique, full prostheses and repairs.

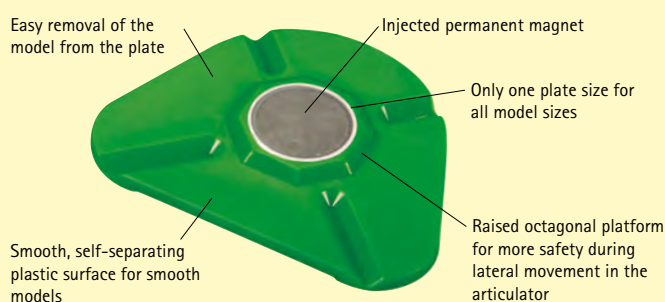
Your benefits at a glance

- **significant time saving** Model manufacturing using the control base (secondary base) in a single working step.
- **significant saving of plaster** The respective impression size determines which of the three Master-Split model former sizes is used. The consumption of plaster is reduced to the absolute minimum required.
- **high degree of precision** As the model is manufactured directly on the secondary base (Master-Split base former), a perfectly smooth, precisely fitting model underside is achieved.
- **long period of reusability** All individual components of the Master-Split model system are reusable and durable.
- **excellent cost-benefit ratio** Thanks to the savings in plaster and time, the economical Master-Split model system pays for itself even after only a few applications.
- **optimised handling** Each model will automatically obtain a Split-Cast separation. Due to the model-articulator separation, working is performed on a small, easy-to-use and functional model.
- **low construction height** Even in cases of limited space (facial arch model assembly, etc.), the low construction height of the Master-Split base former means that the Master-Split model system can be used.
- **increased security** The model holds firmly and precisely on the Master-Split base former, even in the event of lateral movements in the articulator, due to the additional octagonal fixation.
- **perfect aesthetics** Models produced with the Master-Split model system excel thanks to their aesthetic appearance.

Underside



Upper side



Examples of application



Crown and bridgework



Implants and combination prostheses



Full prostheses and model casting technique



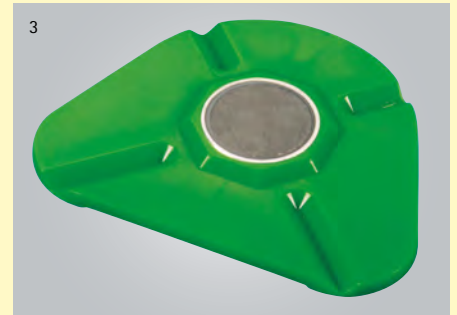
Situation models, repairs



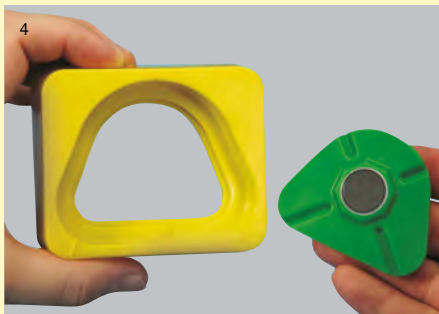
Master-Split Model System



Regardless of which arch or impression size is used,... the Master-Split model formers fit in every case.



The green Master-Split base former – the matching counterpart to the underside of the model.



The Master-Pin sleeves stand proud of the Master-Pins by approx. 0.5 mm, so that a uniform, constant height of the arch is always ensured.



The Master-Split base former is first inserted at the rear edge.



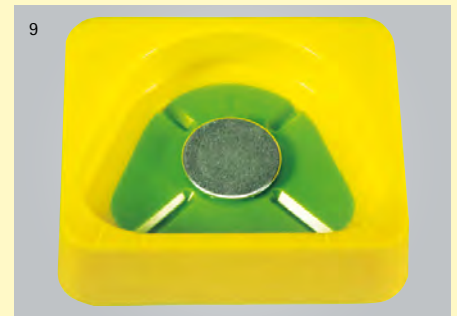
After fitting, the plate is positioned and pressed in by hand.



Only then is the plate pressed in again on the table.



The plate is then inserted correctly when there is a 0.1 mm high step at the edge.



The metal magnetic plate is centred on the Master-Split base former.



The arch is aligned according to the markings of the Master-Split model former.



In the case of sawcut models, the model base is ideally prepared with a liquid base plaster, for example Fluid-Rock.



After the base plaster has hardened, the model is pressed out.

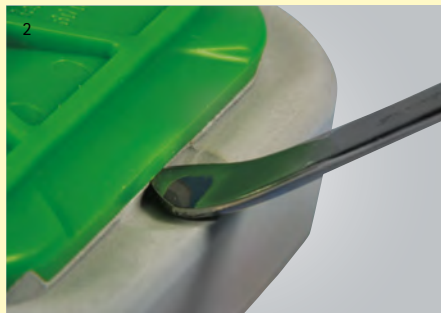


Model systems

Master-Split Model System



The removed die model is subject to Split-Cast separation: Master-Split, when creating a base, with no additional work.



Due to the special shape of the sleeve, an indentation is obtained in the model base, which simplifies the removal of the plate.



The Master-Split base former is removed before the model is trimmed.



Trim the model with the plaster trimmer to obtain the perfect size.



The finished trimmed and dry working model.



If the arch is adequately prepared, trimming is no longer required after preparing the base.

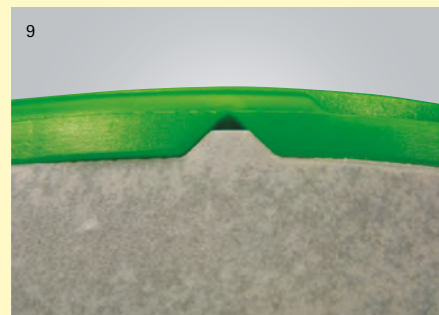
Tip



To ensure exact contact of the model on the Master-Split base former,...



...the finished model is cleaned two to three times using abrasive paper.



Wax or dirt that may deposit on the four model skids later on will not affect precision.

Care and cleaning



Plaster and wax residues can be easily recognised on the signal-green plate so that precise working is simplified.



The Master-Split base formers and the Master-Split model formers only need to be cleaned under running water as their surfaces are extremely smooth and self-separating.



They are intended to be used for plaster and matched with this material. Additional separating is not required.



Master-Split Model System

Split-Cast check



The assembly of the model can be checked very easily ...despite the fixed magnet. and is clearly visible...

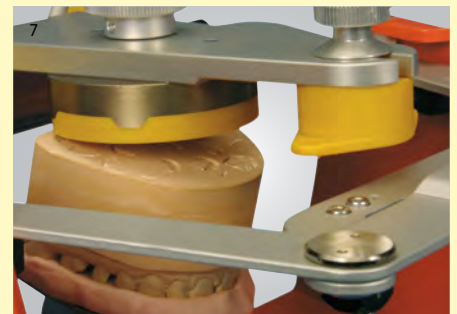
The solution to a familiar problem



The plaster Split-Cast must be trimmed to be integrated into the articulator.



An individual plaster control base is much thicker than...



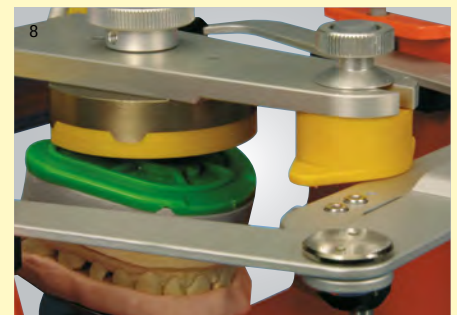
Plaster control bases often cause problems when they are integrated into articulators.



The Master-Split base former is the better choice.



...the specially shaped Master-Split base former.



The Master-Split base former always provides sufficient space.

Assortments

small

1 model former, green
3 base formers
3 metal magnetic plates
REF 360 0124 K



**Master-Split
Model former, small**
2 pieces
REF 360 0118 K

medium

1 model former, yellow
3 base formers
3 metal magnetic plates
REF 360 0124 M



**Master-Split
Model former, medium**
2 pieces
REF 360 0118 M

large

1 model former, red
3 base formers
3 metal magnetic plates
REF 360 0124 G



**Master-Split
Model former, large**
2 pieces
REF 360 0118 G

Master-Split Base former

10 pieces
REF 360 0118 O



Metal magnetic plates
50 pieces
REF 360 0118 1



Each size of the Master-Split model system consists of two elements. Thanks to the three different Master-Split model formers, the correct size is always available for any size of arches or impressions. A reduction in the plaster used is possible thanks to the range of different sizes. When mounting in the articulator, sufficient space is always ensured due to the low height of the Split-Cast. The smooth surface of the material always ensures easy and rapid cleaning.

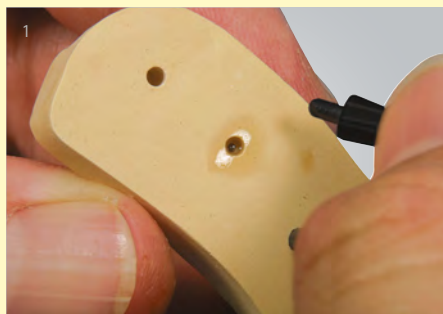


Model systems

Master-Pin Radix-K

The favourably-priced dowel pin solution for the production of models.

Due to the special root shape, only one pin can be used per die. In addition to the retention element, additional bonding surfaces are integrated to ensure secure hold in the die. The smooth surface of the high-tech plastic allows easy integration and removal of the die.



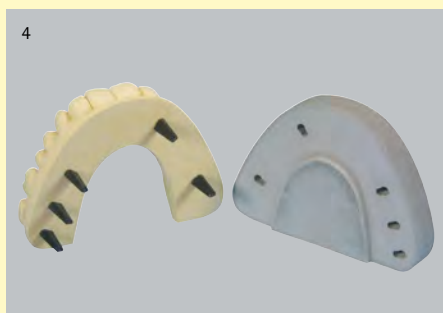
Perfect bonding is ensured when a small amount of adhesive is also applied to the area of the support.



The root shape that is obtained in the model base ensures exact guidance and positioning. The dies are perfectly protected against tilting and twisting.



It is also possible to insert interdental Master-Pins Radix-K that are not bonded in.



Only one drill hole
and one pin for each
die

Additional bonding
surface at the contact
point of the pin/arch
base

Retention element with low
height and a diameter of
only 2 mm

Root-shaped pin shaft for
maximum stability and
perfect hold

Highly stable, extremely
smooth high-tech plastic

The favourably-priced
dowel pin without
sleeve



Master-Pin Radix-K
1000 pieces
REF 360 0123 2



Tungsten carbide drill
Ø 2.0 mm
3 mm shaft
1 piece
REF 360 0123 3

Assortment

250 Master-Pin
Radix-K
1 tungsten car-
bide drill
REF 360 0123 4

Accessories



Master-Sep
Special separating liq-
uid for sawcut models
200 ml
REF 520 0029 0



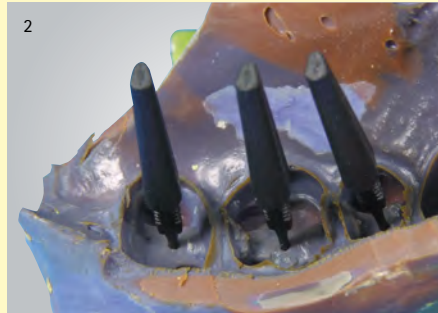
Master-Sep penetrates into
the plaster and seals the
surface. Simultaneously, Mas-
ter-Sep serves as a lubricant
between pin and sleeves.



Master-Pin Radix-S

Master-Pin Radix-S can be aligned and fixed into the impression easily and securely.

The sturdy, high-tech plastic provides the required stability and the root shape offers protection against twisting.



Master-Pin Radix-S can be aligned and fixed into the impression easily and securely.



Casting and preparing the base of the impression are carried out in the usual way.

Thin plug-type pin for reduced displacement of impression material

Optimised harpoon-shaped tip for safe hold in all impression materials (silicones, alginates, etc.)

Modified die-shaped retention element perfectly suited for bottom front teeth

Good handling of the dies due to the outer shape of the pin with good grip

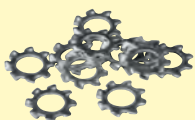
Highly stable, extremely smooth high-tech plastic

Reliable protection against twisting of dies due to root-shaped pin design

The root-like shape of Radix-S forms the perfect counterpart in the base plaster - an alveolar socket



Master-Pin Radix-S
1000 pieces
REF 360 0123 1



Radix-S retention rings
1000 pieces
REF 310 0011 1



Die varnishes

Light-curing die varnish

For smoothing and hardening the plaster surface.

Depending on the plaster and modelling wax, different colours are available. The desired layer thickness can be achieved by applying the varnish several times and can be controlled with the help of the colour intensity.



The disposable brush allows precise application. The layer thickness can be varied by applying the material several times.



The varnishes are translucent. If they are applied several times, the colour becomes more intense and as a result, the layer thickness can be controlled.



The light-curing die varnishes produce a particularly hard surface which protects the die against damage when fitting the crowns.



To produce a cement gap, the varnish must be cured with light immediately after applying. For hardening of preparation margins: Allow varnish to soak into the plaster, then polymerise. The varnish hardens the surface without layering.



Five different colours to ensure contrast to any type of modelling wax.



red
20 ml
REF 540 0100 3



yellow
20 ml
REF 540 0100 4



green
20 ml
REF 540 0100 5



blue
20 ml
REF 540 0100 0



transparent
20 ml
REF 540 0100 6

Accessories



Brush holder, bent
12 pieces
REF 330 0114 1



Brush holder, straight
12 pieces
REF 330 0114 9



Disposable brush
100 pieces
REF 330 0114 2



Mixing block
10 pieces
REF 330 0114 4



Light-curing opaque die varnish

Swift application thanks to good masking capacity.

The opaque die varnishes simplify uniform colouring of the varnish coat. The brush is already integrated into the lid. When steaming the die, the varnish coats remain intact.



When steaming the die, the die varnish diffuses into the plaster surface. Depth polymerisation creates abrasion-resistant bonding to the die. Light-curing opaque die varnish resists high mechanical stress. Even steam-blasting devices cannot affect the strong bonding.



Light-curing opaque die varnish is available in three different colours. The fine masking capacity allows a uniform colour of the varnish layer to be obtained.



red
20 ml
REF 540 0010 4



green
20 ml
REF 540 00103



blue
20 ml
REF 540 0010 1

diephos dentine

Light-curing varnish for abrasion-resistant surface on dies.

The use of diephos dentine facilitates simple assessment of the aesthetic design and colour of all-ceramic restorations.



Two coats of diephos dentine are applied. Each coat is applied thinly and polymerised in a light-curing device for 90 seconds.



The thickness of the coat of a cement gap can be controlled by applying several layers. A single layer is approx. 12 µm thick. Light-curing is required after the application of each layer.



Separating liquid can be easily applied and wax-ups can be prepared on diephos dentine.



- quick application
- abrasion-resistant surface as a result of light-curing
- assessment of aesthetic appearance on the working model
- resistant to steam



Tooth-coloured
10 ml
REF 540 0010 0

The modelling material will not cause discolouration of the tooth. An opaque-like effect is achieved on the subsurface.



Die varnishes

Spacer varnish, gold, silver, silver-blue micro

Air-drying varnishes with metal components for scratch-resistant surfaces.



The gold and silver spacer varnishes produce a layer thickness of approx. 10 µm. The silver-blue micro spacer varnish produces a layer thickness of 5 µm.



The spacer varnishes contain metal components. They produce a particularly abrasion-resistant surface which protects the die against damage.

Specific layer thicknesses of 5 µm or more can be achieved with these spacer varnishes. Each additional coat increases the layer thickness accordingly. The metal components of the gold, silver and silver-blue micro spacer varnishes produce highly abrasion-resistant surfaces and hence protect the die.



gold
20 ml
REF 550 0000 5



silver
20 ml
REF 540 0071 7



silver blue
20 ml
REF 550 0000 6



Thinner for gold
and silver spacer
varnish
20 ml
REF 540 0070 1

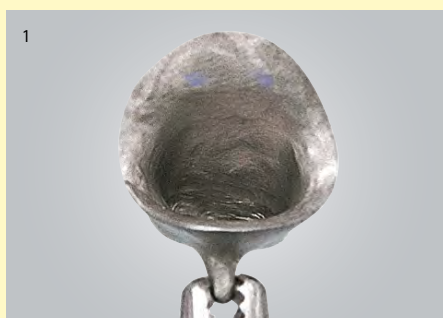


Thinner for silver
blue
spacer varnish
20 ml
REF 540 0069 0

Accessories

Spacer varnish blue

Air-drying varnish used to determine premature and undesired contacts.



As the blue spacer varnish is well suited to detect undesired contact points, it can also be used as an alternative to occlusion spray.



The blue spacer varnish can be applied selectively to avoid overlaps which may result from non-uniform application of spray.



Accordingly, early contact points can be eliminated quickly and in a targeted manner.

The blue spacer varnish has two functions: it defines targeted application of a cement gap and can alternatively be used to determine and eliminate premature and undesired contacts when fitting a framework on the model.

The area of the cement gap of 8–10 µm in the inner side of the crown can be identified very quickly thanks to the clear contrast in colour to the plaster model.



silver blue
20 ml
REF 550 0000 6

Accessories



Thinner for blue spacer varnish
20 ml
REF 540 0069 0



Gloss and hardening agent for plasters

Scratch-resistant surfaces for all plaster types without layering.



Without the hardening agents for plasters, models can be damaged when the restoration is placed on the model.



The specially adjusted consistency causes diffusion into the plaster surface. The high edge stability and scratch resistance avoid damage of any kind.

The gloss and hardening agent for plasters renders the model or die resistant to scratches and creates a surface shine with a layer thickness of only 2 µm.



The gloss and hardening agent for plaster hardens after only 2 minutes.



Gloss and hardening agent for plaster diffuses into the plaster so that it can also be used on the preparation margin.



Gloss and hardening agent for plasters

20 ml
REF 550 0000 1

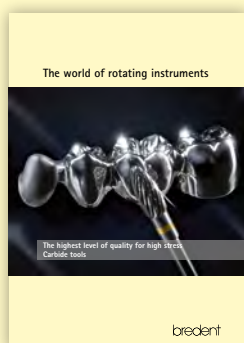
100 ml
REF 550 0000 2

Preparatory work

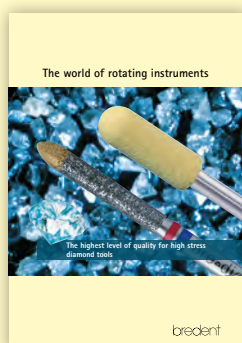
Perfection from the very beginning!



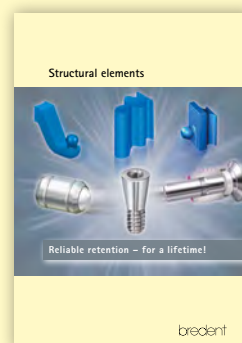
Other offers that may be of interest to you



REF 000 753 GB



REF 000 531 GB



REF 000 570 GB

bredent

bredent GmbH & Co. KG · Weissenhorner Str. 2 · 89250 Senden · Germany · T: (+49) 0 73 09 / 8 72-4 41 · F: (+49) 0 73 09 / 8 72-4 44
www.bredent.com · @: info@bredent.com

Subject to corrections and changes 000611GB-20161220

