

**visio.lign®**

The Aesthetic and Functional system





## visio.lign®

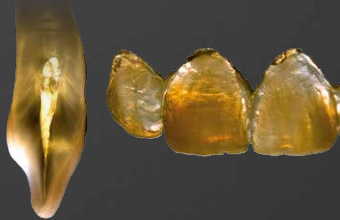
The esthetic and functional system is set to impress with its unique options to create natural beauty, function and physiology. The open system ensures flexibility and freedom, thanks to 6 compatible components: crea.lign®, novo.lign®, neo.lign®, visio.CAM, visio.paint & bond.lign. It provides suitable tools for each workflow and ideal preconditions for perfect implant-prosthetic solutions.

visio.lign® is the system for stability and reliability. The result: durable-prosthetic restorations featuring colour stability and superior load capacity.

layering



**crea.lign®**



milling



**visio.CAM**



veneering



**novo.lign®**



setting up



**neo.lign®**



staining



**visio.paint**



bonding



**bond.lign**



# visio.lign®

**novo.lign®**

visio.link®  
combo.lign

**neo.lign®**

combo.lign Opaquer

K-Primer

MKZ EM-Activator

**2007**

**2008**

**2009**

**2011**

**2012**

**crea.lign®**

visio.sil

**visio.paint**

MKZ-Primer

# 10 years of experience

crea.lign® Paste

Global market leader\* in  
physiological veneers

2013

2014

2016

2017

**visio.CAM**

L-Design  
(**novo.lign®** & **neo.lign®**)

**bond.lign**

crea.lign® Paste GUM

\* 6800 users  
1,2 Mio. restorations



*Opalescence of natural tooth*

MDT Jürgen Freitag, Bad Homburg, Germany

**crea.lign<sup>®</sup>**

create natural beauty

**veneering composite**

The light-curing composite features impressive natural opalescence and unparalleled light transmission for natural beauty.





*Opalescence of crea.lign*

Dr. Vincenzo Musella, Modena, Italy

**novo.lign<sup>®</sup>**

veneer natural beauty

**veneers**

The novo.lign<sup>®</sup> veneers feature an extended neck and a natural depth thanks to the morphological layer structure. The gold standard in implant prosthetics.







**neo.lign<sup>®</sup>**

choose natural

**denture teeth**

The neo.lign<sup>®</sup> denture teeth feature the same shades, designs and materials as the novo.lign<sup>®</sup> veneers - optimised for fixed/removable restorations.



beauty

# visio.CAM

## design natural beauty

### composite blanks

The material benefits from the visio.lign® system are also available for CAD/CAM processing. The blanks from the visio.CAM line are compatible with the entire visio.lign® system.





# visio.paint

## colour natural beauty

### stains

The visio.paint stains enable fast  
and simple individualisation of veneers.









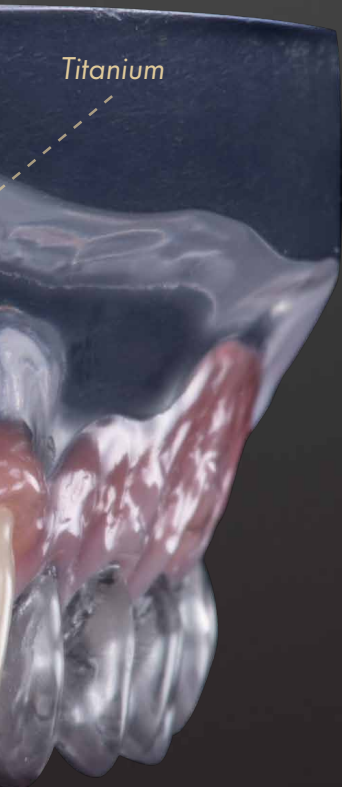
NPM

HIPC

BioHPP®

Zirkonia

PM



Titanium

# **bond.lign**

secure natural beauty

## primer/bonder

The primer/bonder system for a permanent and secure chemical adhesive bond between all system components and common framework materials – including BioHPP® (PEEK).

**visio.lign<sup>®</sup>**

The Aesthetic and Functional system

## Overview of visio.lign® media



**crea.lign®**  
**veneering composite**  
A presentation of  
crea.lign®, its multiple  
applications and unique  
properties.

REF 000577GB



**crea.lign®**  
**Red-White Aesthetic**  
Learn more about  
the possibilities of  
crea.lign® in red-white  
aesthetics.

REF 000651GB



**visio.lign®**  
**Presentation  
of the system**  
A compact summary  
of the variety of  
products of the  
visio.lign® system.

REF 009504GB



**visio.lign®**  
**Manual**  
Step-by-step instructions  
of the various processing  
techniques and possibilities  
of the visio.lign® system.

REF 000234GB



[www.visio-lign.com](http://www.visio-lign.com)

bredent  
group

000224GB-20170220  
Subject to errors and changes

