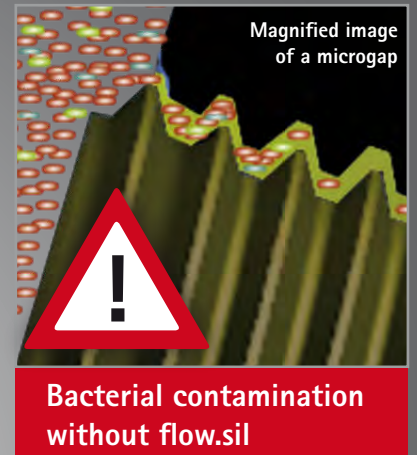


flow.sil – microgap sealing



flow.sil passively and actively protects cavities against bacteria

Passively

The thin consistency of flow.sil enables even distribution in otherwise inaccessible areas, thereby perfectly sealing up any cavities. The silicon matrix of flow.sil, which does not contain plasticisers, ensures reliable sealing through even distribution, and thus prevents the harbouring of germs.

Actively

The addition of thymol disinfects the material itself as well as the surrounding area, and prevents the build-up of biofilm. flow.sil is biologically compatible and is made of plant-based material.

flow.sil is ideal for filling the gap between the abutment and the prosthetic restoration or screw, whilst disinfecting at the same time.

- Reduces peri-implantitis
- Reduces halitosis
- Prevents chronic inflammation of the area of application
- Prevents contamination of the cavities
- Provides a clean seal

flow.sil – easy to use

- Even easy to apply to hard-to-reach areas
- Hardens quickly, so the patient does not have to wait for long
- Any excess product can be easily removed without a scalpel



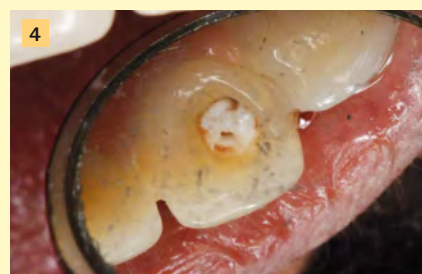
Apply flow.sil to the pre-cleaned interior of the crown and the screw canal.



Place the construction on the abutments. Any excess material will be squeezed out evenly.



flow.sil has a processing time of four minutes, enabling a stress-free procedure. Insert the screws and allow any excess product to harden.



If the excess product is spread out evenly, this means any undesirable gaps will have been sealed.



The hardened flow.sil can simply be removed using a tool. The excess flow.sil comes away right at the very edge of the construction, preventing bacteria from entering the cavity.



flow.sil
REF 540 0127 0
Set contains
5 ml double cartridge
4 mixing cannulas
4 tips

