

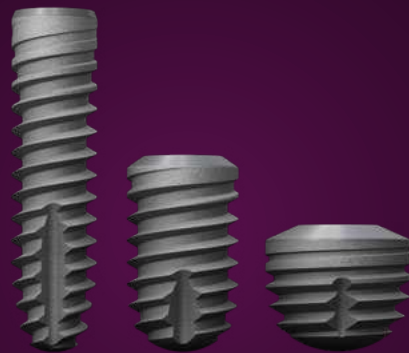
copaSKY

Implant system





copa
SKY 



Long.

Short.

Ultra-short.

The new copaSKY implants stand out thanks to the many years of experience with SKY implant systems and local production in southern Germany. Specifically designed for any bone height.

Our highlight is the copaSKY ultra short. With a length of just 5.2 mm, it is ideal for use in patient's with low bone supply.

In a lot of cases, this length will make it possible to avoid bone reconstruction surgery in the future. The existing bone is complemented by the implant design and the bone-oriented surgical protocol. As a result, you can take advantage of the high primary stability and the best possible osseointegration.

copa
SKY 
IMPLANT SYSTEM

bredent
medical

copaSKY

Testimonials



Prof. Dr Emanuel Bratu

University of Timisoara,
Romania

Using the copaSKY implants enables you to achieve good primary stability in any type of bone. The SKY system's Torx connection is strong enough to withstand the high torques resulting from the large contact surfaces with the bone. With the special crestal drills for copaSKY implants, the bone is perfectly prepared for insertion – regardless of whether the bone is soft, medium-hard or hard.



Dr Michael Weiss

OPUS DC Ulm

Using copaSKY can calm the fears a lot of patients have before implant restorations with extensive surgery, as optimal use can be made of the remaining bone.



Dr Burzin Khan MDS

Opus Dental Specialities
Mumbai, India

copaSKY is a very reliable option for implant restorations at an affordable price in cases where bone height above the sinus or mandibular nerve is limited. The short implant's self-cutting thread ensures very good primary stability. This makes copaSKY a kind of "plan B" for cases where the challenges and risks of augmentations stop the patient opting for implants.

“Short and ultra-short implants have established themselves as an alternative to extensive augmentations and have opened up new options for the treatment of patients with low bone volume. copaSKY impressed me with its primary stability in particular.”



Prof. Dr Jörg Neugebauer
Dental practice
Landsberg am Lech

- Prof. Dr Jörg Neugebauer -

copaSKY

The benefits

Reliable all-round package

Patients with reduced bone volumes need specific solutions if they are to enjoy the benefits of secure and durable implant restorations.

With our copaSKY implant system, you can avoid classic procedures such as bone reconstruction through augmentation or sinus lifts.

The benefits

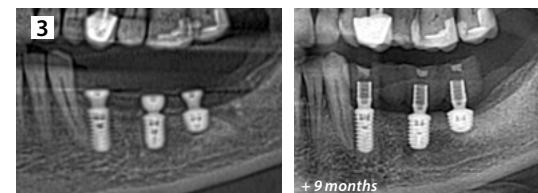
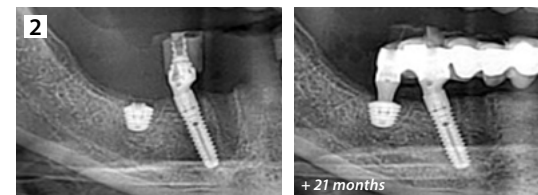
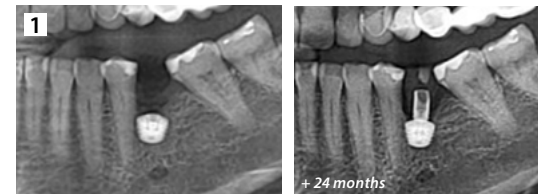
Multifunctional implant neck for perfect interaction and high primary stability.

Small but powerful

Our copaSKY implant system offers numerous advantages thanks to its structure and the materials used:

- High primary stability in almost all bone qualities.
- Back taper for the apposition of bone chips. This reduces the friction with the cortical bone and ensures that this bone is preserved in the long term.
- The ultra short copaSKY implants are particularly suitable for tooth-for-tooth restorations, especially in the lateral region.

Stable bone level



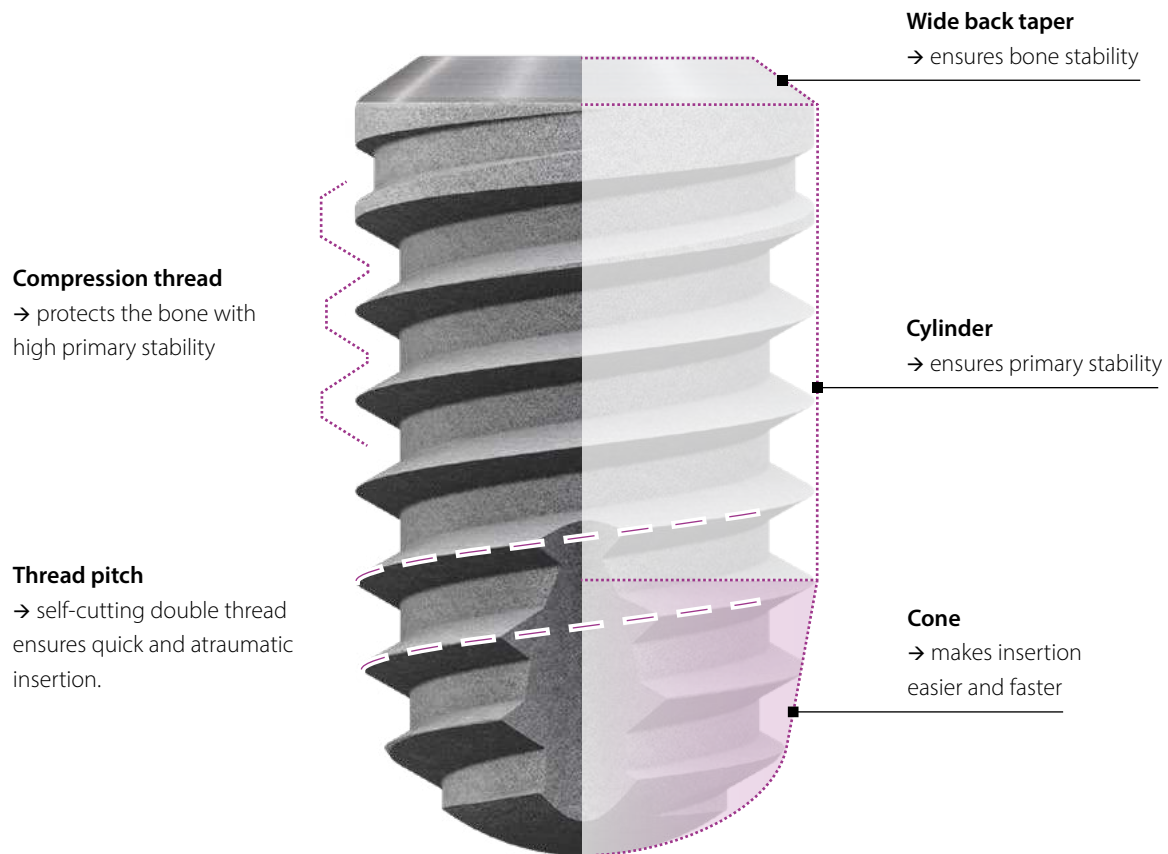
"The stable bone around the copaSKY implants is simply phenomenal"

Images and comments:
Zafer Kazak, Istanbul, Turkey

Implant structure

Conical-cylindrical implant shape

→ optimal, even distribution of chewing forces



Implant-abutment connection

The advantages of the conical-parallel connection:



- A connection geometry for all diameters reduces the size of the prosthetics range. This makes storage easier and increases process reliability.
- Stable and reversible conical-parallel implant-abutment connection for the easy removal of prostheses.

Torx

→ as the gold standard for high torque insertion.



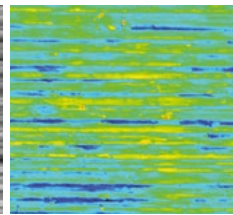
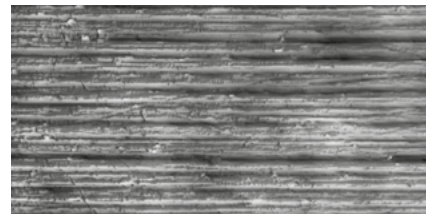
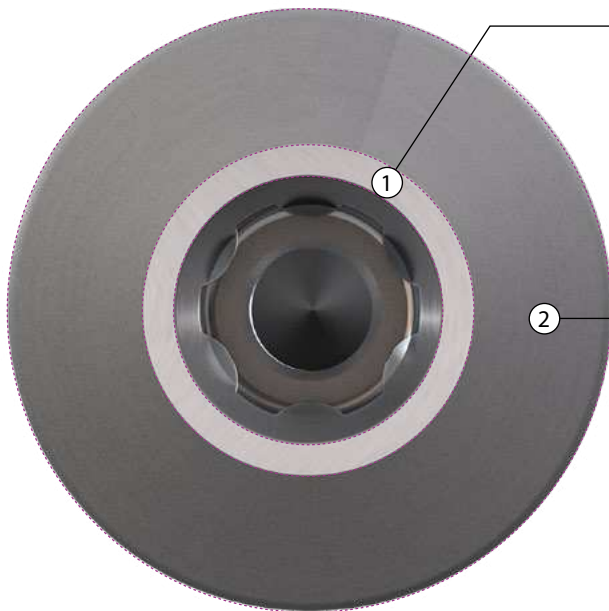
→ no damage to the implant and no risk of the insertion instruments getting stuck.

copaSKY

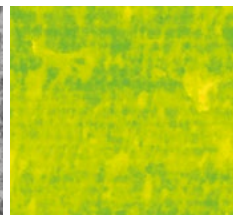
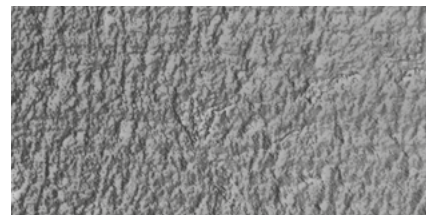
Implant surface

Surface apposition

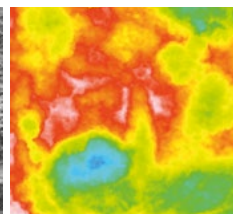
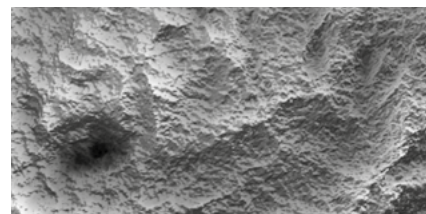
The multi-functional implant neck in combination with abutment material, design and surface is an essential prerequisite for the formation of a gingival cuff that protects the implant. Our one-time therapy also supports this process.



1. Epithelium (Ra ~ 0.07 μm)



2. Connective tissue (Ra ~ 0.36 μm)



3. Bone and deposited bone (Ra ~ 2.2 μm)



copaSKY

Abutments

BioHPP copaSKY elegance Abutments

The BioHPP copaSKY elegance hybrid abutment is the ideal abutment for one-time therapy and immediate restoration:

- The soft BioHPP abutment body protects the implant against overloading.
- The titanium screw seat makes it a final abutment.

There is no need to replace the abutment, meaning that the attached soft tissue is not destroyed.



Histological analysis of SKY elegance abutments made from BioHPP. Detail of the apposition of connective tissue after 8 weeks.

*Prof. JE Maté Sánchez de Val.
Murcia, Spain,
Poster EAO Meeting 2016, Paris*



This leaves all technologies available to you:

- Prefabricated abutments that are easy to customise
- Individual abutments produced manually using the for2press process
- CAD/CAM production from copaSKY elegance BioHPP prefabs

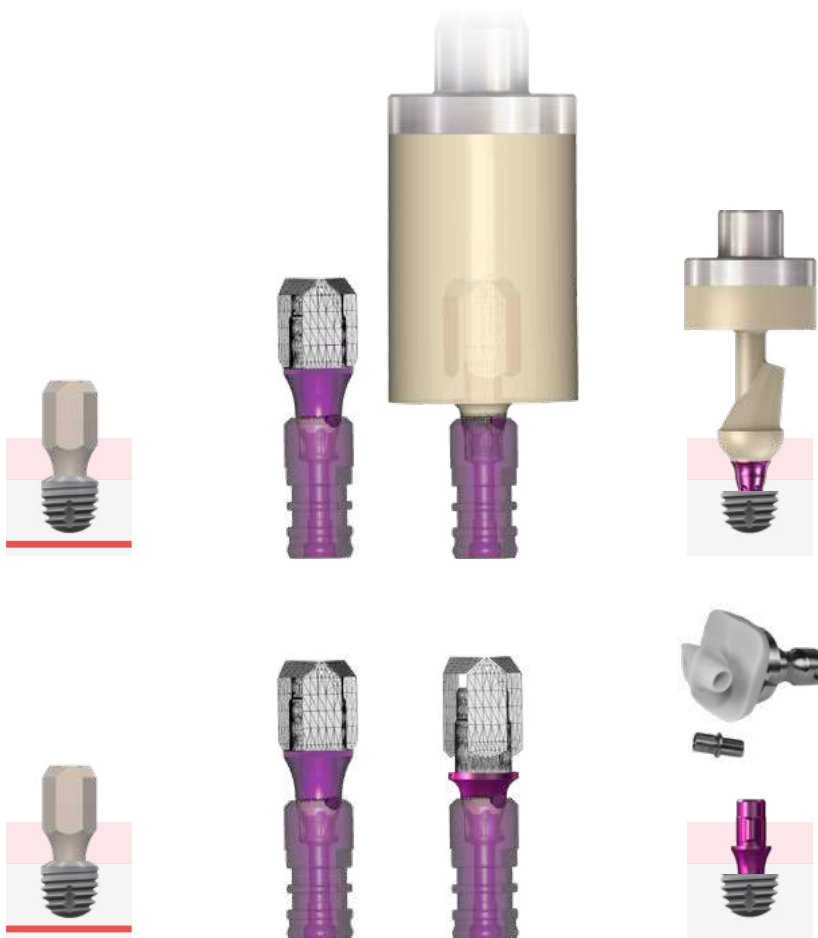
We recommend using the BioHPP copaSKY elegance abutments for ultra-short implants as a "stress breaker" for the long-term protection of the implants.

CAD/CAM restorations

Our prosthetic components for copaSKY are ideal for the digital process landscape and offer a complete workflow for all open CAD/CAM systems in the laboratory.

For CAD/CAM processing, we offer:

- PEEK scan abutments
- Screwed laboratory analogue for printed models
- BioHPP prefabs with original connection geometry
- Titanium prefabs with original connection geometry



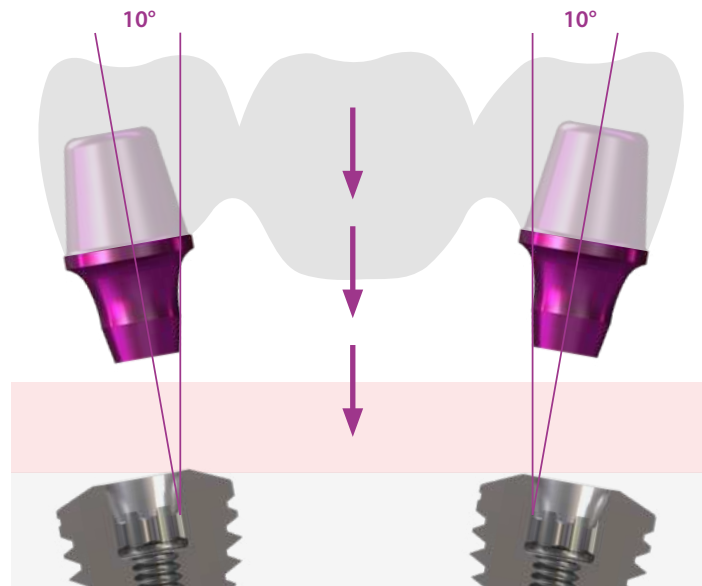
copaSKY

Abutments

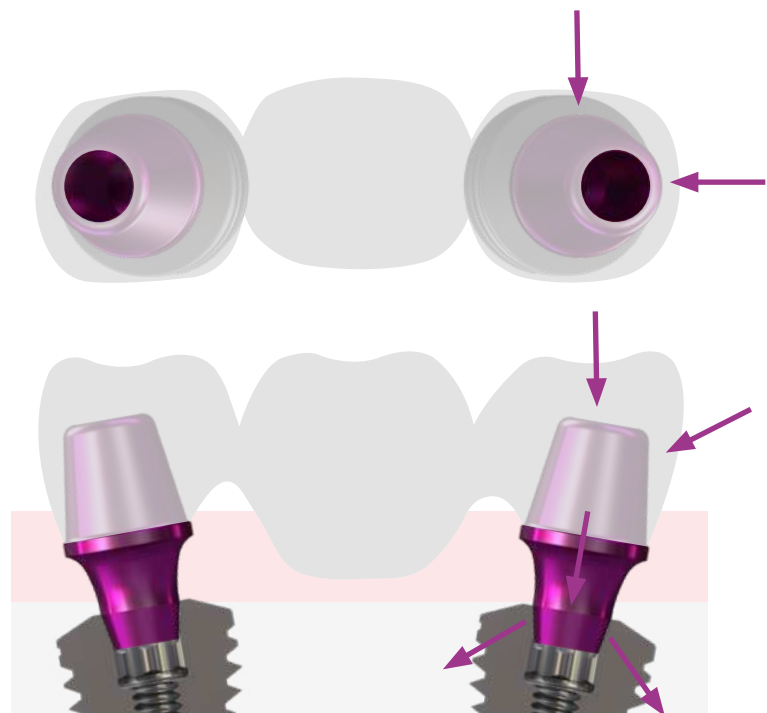
Bridge and bar abutment

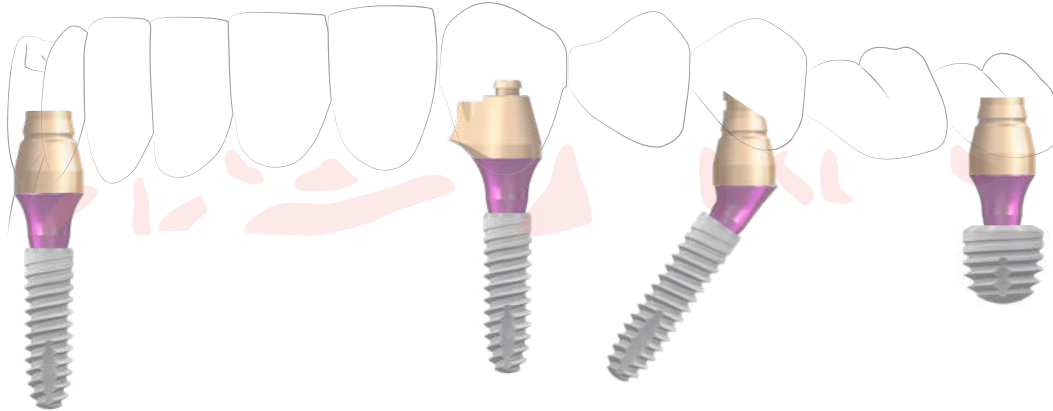
In a lot of cases, directly screwed restorations with bonded bridges require angle compensation, and the path of lateral and occlusal force loading onto the implant is particularly important for this.

The copaSKY bridge abutment has no antirotational mechanism. The flat cone connection allows 20° angle compensation between two implants, meaning that the bridges can be bonded in the laboratory.



The construction can be easily integrated and occlusally screwed. The long cone directs the lateral and occlusal forces onto the implant directly and therefore protects the screw against loosening and breakage.

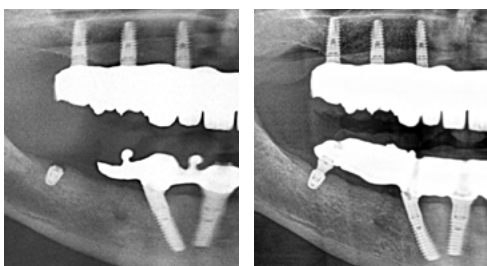




uni.cone abutment

fast and fixed

The name of this abutment reflects its versatility. Universal use supplements intelligent restoration concepts, increases safety through standardised processes and also reduces practice costs regardless of the implant system used.



Photos: Prof. Dr. Jörg Neugebauer, Landsberg am Lech, Germany

Short copaSKY implants are ideal for avoiding extensions of more than one tooth with SKY fast & fixed – supplied with copaSKY uni.cone abutments.

The copaSKY uni.cone abutments are supplied with the same prosthetic parts and the same prosthetic concept as the SKY uni.cone abutments.



copaSKY

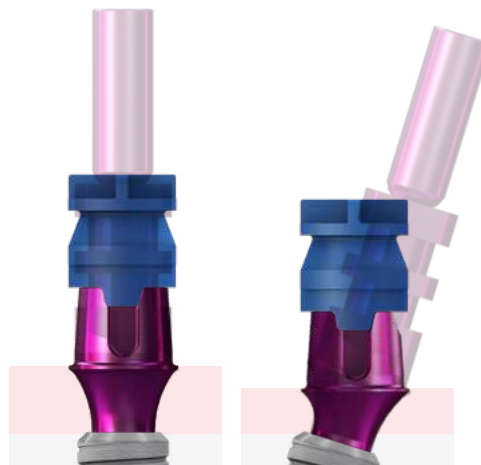
Abutments

exo

Multifunctional abutment

The copaSKY exso abutment ensures efficient and economical processes for cemented restorations and enables one-time therapy with no abutment change.

- Cemented crowns and bridge restorations are created easily, quickly and aesthetically on copaSKY exso abutments. The process is highly economical as the impression abutment is the same as the final abutment.
- Easy impression-taking of angled implants at the implant level thanks to angle compensation up to 35°.
- Use of the SKY impression coping for closed trays (REF SKYnPAKA).
- The easy customisation of the abutments in the laboratory create the prerequisites for an optimally designed aesthetic.





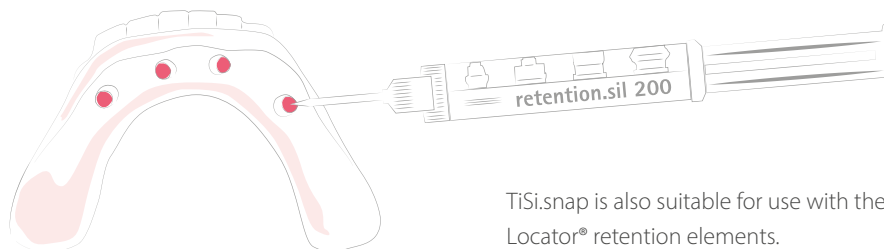
TiSi.snap

fixed and yet removable

The TiSi.snap abutments with large retention surfaces and the resilient special silicone retention.sil set new standards for the reliable and long-term fixation of prostheses. The unique resilience gives patients a natural chewing feeling.

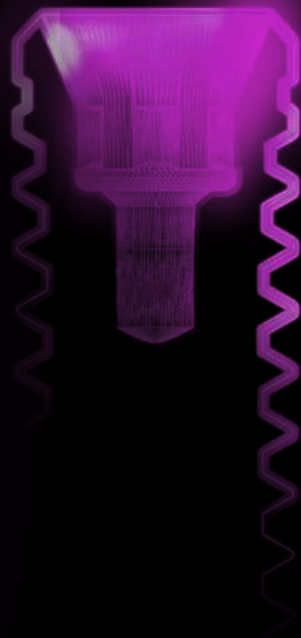
Narrow implants in the front and posterior ultra-short implants support the stability of the prosthesis thanks to their large support area.

The bone is preserved because little pressure is exerted on the posterior bone.



TiSi.snap is also suitable for use with the Locator® retention elements.

copa
SKY 
IMPLANT SYSTEM



DENTAL INNOVATIONS
SINCE 1974

bredent
group

bredent medical GmbH & Co. KG · Weissenhorner Str. 2 · 89250 Senden · Germany · T: +49 7309 872-441 · F: +49 7309 872-444 · www.bredent-medical.com · @: info-medical@bredent.com



009952GB-20220203 Mistake and subject to change reserved